

Phospho-STMN1-S25 Rabbit Polyclonal Antibody



CABP0220

Product Information

Size:

20uL, 50uL, 100uL, 200uL

Observed MW:

17kDa

Calculated MW:

17kDa/19kDa

Applications:

WB IHC

Reactivity:

Human, Mouse, Rat

Antibody Information

Recommended dilutions:

WB 1:500 - 1:2000 IHC 1:50
- 1:100

Source:

Rabbit

Isotype:

IgG

Purification:

Affinity purification

Protein Background

This gene belongs to the stathmin family of genes. It encodes a ubiquitous cytosolic phosphoprotein proposed to function as an intracellular relay integrating regulatory signals of the cellular environment. The encoded protein is involved in the regulation of the microtubule filament system by destabilizing microtubules. It prevents assembly and promotes disassembly of microtubules. Multiple transcript variants encoding different isoforms have been found for this gene.

Immunogen information

Gene ID:

3925

Uniprot

P16949

Synonyms:

STMN1; C1orf215; LAP18; Lag; OP18; PP17; PP19; PR22; SMN;
stathmin

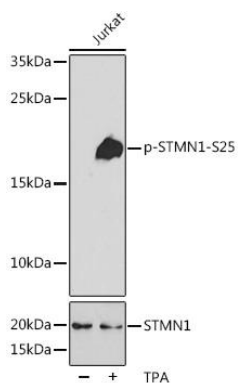
Immunogen:

A phospho specific peptide corresponding to residues surrounding
S25 of human STMN1

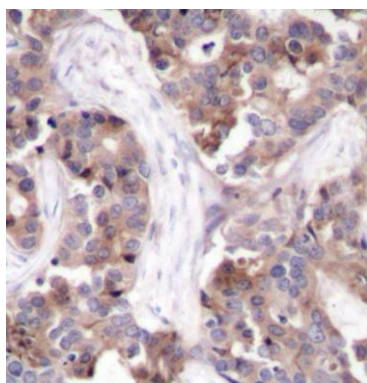
Storage:

Store at -20°C. Avoid freeze / thaw cycles. Buffer: PBS with 0.02%
sodium azide, 50% glycerol, pH7.3.

Product Images



Western blot analysis of extracts of Jurkat cells, using Phospho-STMN1-S25 pAb (CABP0220) at 1:2000 dilution or STMN1 antibody (CAB14018). Jurkat cells were treated by PMA/TPA (200nM) for 10 minutes. Secondary antibody: HRP Goat Anti-Rabbit IgG (H+L) (CABS014) at 1:10000 dilution. Lysates/proteins: 25ug per lane. Blocking buffer: 3% BSA. Detection: ECL Basic Kit (CABM00020). Exposure time: 10s.



Immunohistochemistry of paraffin-embedded human breast carcinoma using Phospho-STMN1-S25 antibody (CABP0220).