

Phospho-STMN1-S38 Rabbit Polyclonal Antibody



CABP0221

Product Information

Size:

20uL, 50uL, 100uL, 200uL

Observed MW:

19KDa

Calculated MW:

17kDa/19kDa

Applications:

WB

Reactivity:

Mouse

Protein Background

This gene belongs to the stathmin family of genes. It encodes a ubiquitous cytosolic phosphoprotein proposed to function as an intracellular relay integrating regulatory signals of the cellular environment. The encoded protein is involved in the regulation of the microtubule filament system by destabilizing microtubules. It prevents assembly and promotes disassembly of microtubules. Multiple transcript variants encoding different isoforms have been found for this gene.

Immunogen information

Gene ID:

3925

Uniprot

P16949

Synonyms:

STMN1; C1orf215; LAP18; Lag; OP18; PP17; PP19; PR22; SMN; stathmin

Antibody Information

Recommended dilutions:

WB 1:500 - 1:2000

Source:

Rabbit

Isotype:

IgG

Purification:

Affinity purification

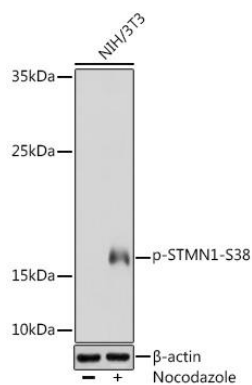
Immunogen:

A phospho specific peptide corresponding to residues surrounding S38 of human STMN1

Storage:

Store at -20°C. Avoid freeze / thaw cycles. Buffer: PBS with 0.02% sodium azide, 50% glycerol, pH7.3.

Product Images



Western blot analysis of extracts of NIH/3T3 cells, using Phospho-STMN1-S38 Rabbit pAb (CABP0221) at 1:1000 dilution. NIH/3T3 cells were treated by Nocodazole (50 ng/ml) at 37°C for 20 hours. Secondary antibody: HRP Goat Anti-Rabbit IgG (H+L) (CABS014) at 1:10000 dilution. Lysates/proteins: 25ug per lane. Blocking buffer: 3% BSA. Detection: ECL Basic Kit (CABM00020). Exposure time: 60s.