

# Phospho-EGFR-Y1197 Rabbit Polyclonal Antibody



CABP0223

## Product Information

### Size:

50uL, 100uL, 200uL

### Observed MW:

170kDa

### Calculated MW:

44kDa/69kDa/77kDa/134kDa

### Applications:

WB

### Reactivity:

Human

## Protein Background

The protein encoded by this gene is a transmembrane glycoprotein that is a member of the protein kinase superfamily. This protein is a receptor for members of the epidermal growth factor family. EGFR is a cell surface protein that binds to epidermal growth factor. Binding of the protein to a ligand induces receptor dimerization and tyrosine autophosphorylation and leads to cell proliferation. Mutations in this gene are associated with lung cancer.

## Immunogen information

### Gene ID:

1956

### Uniprot

P00533

### Synonyms:

EGFR; ERBB; ERBB1; HER1; NISBD2; PIG61; mENA

## Antibody Information

### Recommended dilutions:

WB 1:500 - 1:2000

### Source:

Rabbit

### Isotype:

IgG

### Purification:

Affinity purification

### Immunogen:

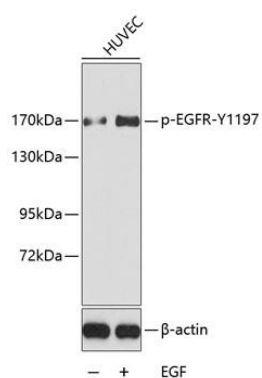
A phospho specific peptide corresponding to residues surrounding Y1197 of human EGFR

### Storage:

Store at -20°C. Avoid freeze / thaw cycles. Buffer: PBS with 0.02% sodium azide, 50% glycerol, pH7.3.

## Product Images

---



Western blot analysis of extracts from HUVEC cells, using Phospho-EGFR-Y1197 antibody (CABP0223). Secondary antibody: HRP Goat Anti-Rabbit IgG (H+L) (CABS014) at 1:10000 dilution. Lysates/proteins: 25ug per lane. Blocking buffer: 3% BSA.