

# Phospho-BRCA1-S1423 Rabbit Polyclonal Antibody

## CABP0232



### Product Information

**Size:**

20uL, 50uL, 100uL, 200uL

**Observed MW:**

270kDa

**Calculated MW:**

7kDa/78-85kDa/202-210kDa

**Applications:**

WB IHC IF

**Reactivity:**

Human, Mouse, Rat

### Antibody Information

**Recommended dilutions:**

WB 1:500 - 1:2000 IHC 1:50  
- 1:200 IF 1:50 - 1:200

**Source:**

Rabbit

**Isotype:**

IgG

**Purification:**

Affinity purification

### Protein Background

This gene encodes a nuclear phosphoprotein that plays a role in maintaining genomic stability, and it also acts as a tumor suppressor. The encoded protein combines with other tumor suppressors, DNA damage sensors, and signal transducers to form a large multi-subunit protein complex known as the BRCA1-associated genome surveillance complex (BASC). This gene product associates with RNA polymerase II, and through the C-terminal domain, also interacts with histone deacetylase complexes. This protein thus plays a role in transcription, DNA repair of double-stranded breaks, and recombination. Mutations in this gene are responsible for approximately 40% of inherited breast cancers and more than 80% of inherited breast and ovarian cancers. Alternative splicing plays a role in modulating the subcellular localization and physiological function of this gene. Many alternatively spliced transcript variants, some of which are disease-associated mutations, have been described for this gene, but the full-length nature of only some of these variants has been described. A related pseudogene, which is also located on chromosome 17, has been identified.

### Immunogen information

**Gene ID:**

672

**Uniprot**

P38398

**Synonyms:**

BRCA1; BRCAI; BRCC1; BROVCA1; FANCS; IRIS; PNCA4; PPP1R53;  
PSCP; RNF53

**Immunogen:**

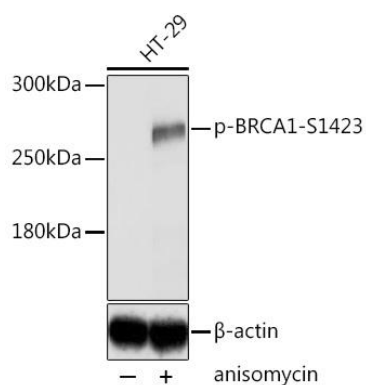
A synthetic phosphorylated peptide around S1423 of human BRCA1 (NP\_009225.1).

**Storage:**

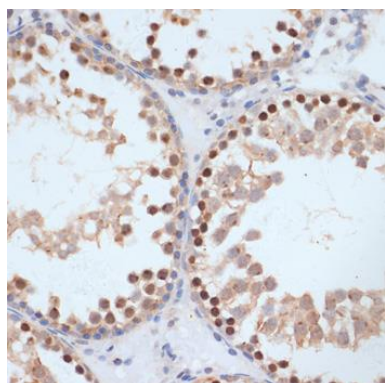
Store at -20°C. Avoid freeze / thaw cycles. Buffer: PBS with 0.02% sodium azide, 50% glycerol, pH7.3.

## Product Images

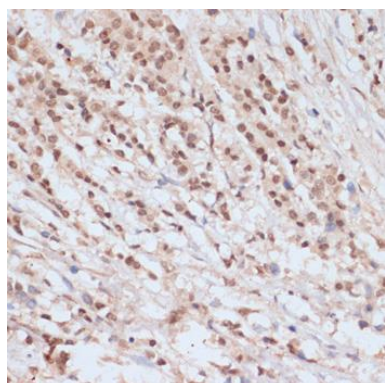
---



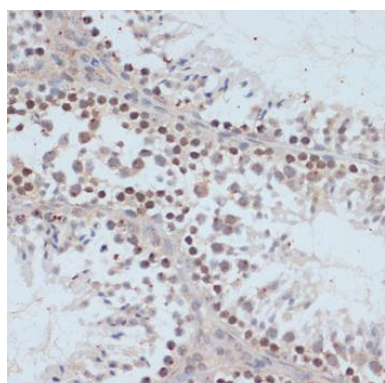
Western blot analysis of extracts of HT-29 cells, using Phospho-BRCA1-S1423 antibody (CABP0232) at 1:2000 dilution. HT-29 cells were treated by Anisomycin (5ug/mL) for 30 minutes after serum-starvation overnight. Secondary antibody: HRP Goat Anti-Rabbit IgG (H+L) (CABS014) at 1:10000 dilution. Lysates/proteins: 25ug per lane. Blocking buffer: 3% BSA. Detection: ECL Basic Kit (CABM00020). Exposure time: 5s.



Immunohistochemistry of paraffin-embedded rat testis using Phospho-BRCA1-S1423 antibody (CABP0232) at dilution of 1:100 (40x lens).



Immunohistochemistry of paraffin-embedded human breast cancer using Phospho-BRCA1-S1423 antibody (CABP0232) at dilution of 1:100 (40x lens).



Immunohistochemistry of paraffin-embedded mouse testis using Phospho-BRCA1-S1423 antibody (CABP0232) at dilution of 1:100 (40x lens).