

# Phospho-MAPK3-Y204 Rabbit Polyclonal Antibody

## CABP0235



### Product Information

**Size:**

20uL, 50uL, 100uL, 200uL

**Observed MW:**

43kDa

**Calculated MW:**

38kDa/40kDa/43kDa

**Applications:**

WB IHC IF IP

**Reactivity:**

Human, Mouse, Rat

### Antibody Information

**Recommended dilutions:**

WB 1:500 - 1:2000 IHC 1:50  
- 1:100 IF 1:100 - 1:200 IP  
1:50 - 1:100

**Source:**

Rabbit

**Isotype:**

IgG

**Purification:**

Affinity purification

### Protein Background

The protein encoded by this gene is a member of the MAP kinase family. MAP kinases, also known as extracellular signal-regulated kinases (ERKs), act in a signaling cascade that regulates various cellular processes such as proliferation, differentiation, and cell cycle progression in response to a variety of extracellular signals. This kinase is activated by upstream kinases, resulting in its translocation to the nucleus where it phosphorylates nuclear targets. Alternatively spliced transcript variants encoding different protein isoforms have been described.

### Immunogen information

**Gene ID:**

5595

**Uniprot**

P27361

**Synonyms:**

ERK-1; ERK1; ERT2; HS44KDAP; HUMKER1A; P44ERK1; P44MAPK; PRKM3; p44-ERK1; p44-MAPK; MAPK3

**Immunogen:**

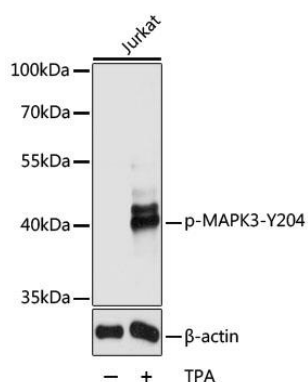
A synthetic phosphorylated peptide around Y204 of human MAPK3 (NP\_002737.2).

**Storage:**

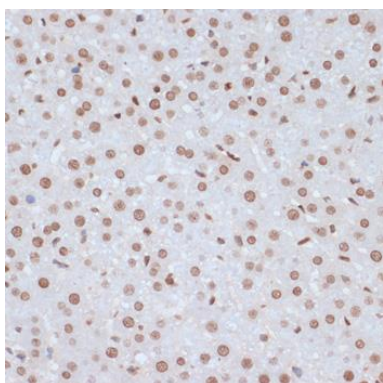
Store at -20°C. Avoid freeze / thaw cycles. Buffer: PBS with 0.02% sodium azide, 50% glycerol, pH7.3.

## Product Images

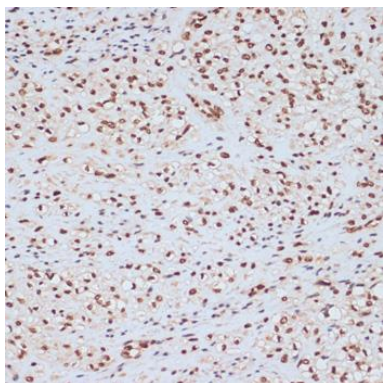
---



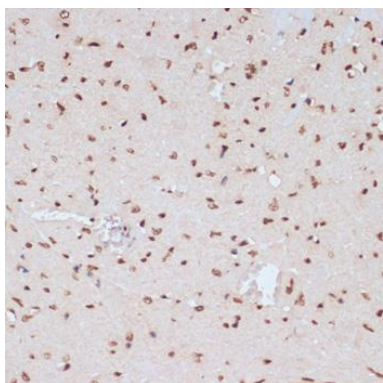
Western blot analysis of extracts of Jurkat cells, using Phospho-MAPK3-Y204 antibody (CABP0235) at 1:2000 dilution. Jurkat cells were treated by PMA/TPA (200nM) for 10 minutes. Secondary antibody: HRP Goat Anti-Rabbit IgG (H+L) (CABS014) at 1:10000 dilution. Lysates/proteins: 25ug per lane. Blocking buffer: 3% BSA. Detection: ECL Basic Kit (CABM00020). Exposure time: 30s.



Immunohistochemistry of paraffin-embedded rat liver using Phospho-MAPK3-Y204 antibody (CABP0235) at dilution of 1:100 (40x lens).



Immunohistochemistry of paraffin-embedded human uterus using Phospho-MAPK3-Y204 antibody (CABP0235) at dilution of 1:100 (40x lens).



Immunohistochemistry of paraffin-embedded mouse heart using Phospho-MAPK3-Y204 antibody (CABP0235) at dilution of 1:100 (40x lens).