

# Phospho-SYN1-S9 Rabbit Polyclonal Antibody



CABP0244

---

## Product Information

### Size:

50uL, 100uL, 200uL

### Observed MW:

74kDa

### Calculated MW:

70kDa/74kDa

### Applications:

WB IF

### Reactivity:

Human, Mouse, Rat

## Antibody Information

### Recommended dilutions:

WB 1:500 - 1:2000 IF 1:100 - 1:200

### Source:

Rabbit

### Isotype:

IgG

### Purification:

Affinity purification

## Protein Background

This gene is a member of the synapsin gene family. Synapsins encode neuronal phosphoproteins which associate with the cytoplasmic surface of synaptic vesicles. Family members are characterized by common protein domains, and they are implicated in synaptogenesis and the modulation of neurotransmitter release, suggesting a potential role in several neuropsychiatric diseases. This member of the synapsin family plays a role in regulation of axonogenesis and synaptogenesis. The protein encoded serves as a substrate for several different protein kinases and phosphorylation may function in the regulation of this protein in the nerve terminal. Mutations in this gene may be associated with X-linked disorders with primary neuronal degeneration such as Rett syndrome. Alternatively spliced transcript variants encoding different isoforms have been identified.

## Immunogen information

### Gene ID:

6853

### Uniprot

P17600

### Synonyms:

SYN1; SYN1a; SYN1b; SYNI

### Immunogen:

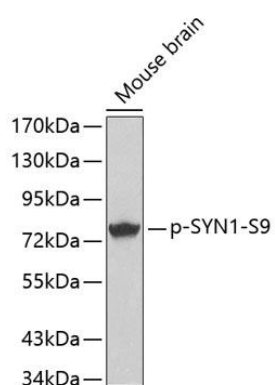
A phospho specific peptide corresponding to residues surrounding S9 of human SYN1

### Storage:

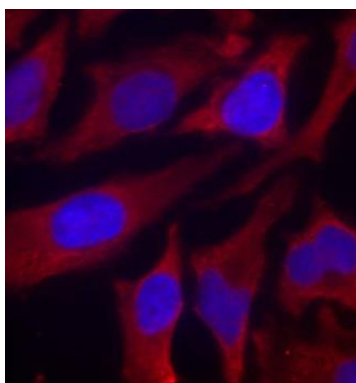
Store at -20°C. Avoid freeze / thaw cycles. Buffer: PBS with 0.02% sodium azide, 50% glycerol, pH7.3.

## Product Images

---



Western blot analysis of extracts from mouse Brain tissue using Phospho-SYN1-S9 antibody (CABP0244). Secondary antibody: HRP Goat Anti-Rabbit IgG (H+L) (CABS014) at 1:10000 dilution. Lysates/proteins: 25ug per lane. Blocking buffer: 3% BSA.



Immunofluorescence analysis of methanol-fixed HeLa cells using Phospho-SYN1-S9 antibody (CABP0244).