

# Phospho-p70 S6 kinase-S424 Rabbit Polyclonal Antibody

## CABP0253



### Product Information

**Size:**

50uL, 100uL, 200uL

**Observed MW:**

70kDa

**Calculated MW:**

51kDa/52kDa/56kDa/59kDa

**Applications:**

WB IHC IF

**Reactivity:**

Human, Mouse, Rat

### Antibody Information

**Recommended dilutions:**

WB 1:500 - 1:2000 IHC 1:50  
- 1:100 IF 1:100 - 1:200

**Source:**

Rabbit

**Isotype:**

IgG

**Purification:**

Affinity purification

### Protein Background

This gene encodes a member of the ribosomal S6 kinase family of serine/threonine kinases. The encoded protein responds to mTOR (mammalian target of rapamycin) signaling to promote protein synthesis, cell growth, and cell proliferation. Activity of this gene has been associated with human cancer. Alternatively spliced transcript variants have been observed. The use of alternative translation start sites results in isoforms with longer or shorter N-termini which may differ in their subcellular localizations. There are two pseudogenes for this gene on chromosome 17.

### Immunogen information

**Gene ID:**

6198

**Uniprot**

P23443

**Synonyms:**

PS6K; S6K; S6K-beta-1; S6K1; STK14A; p70 S6KA; p70(S6K)-alpha;  
p70-S6K; p70-alpha; P70 S6K; RPS6KB1; p70S6KA

**Immunogen:**

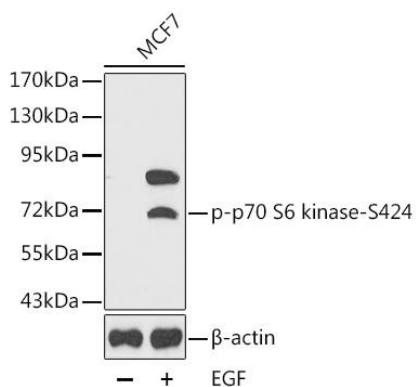
A phospho specific peptide corresponding to residues surrounding S424 of human P70 S6K

**Storage:**

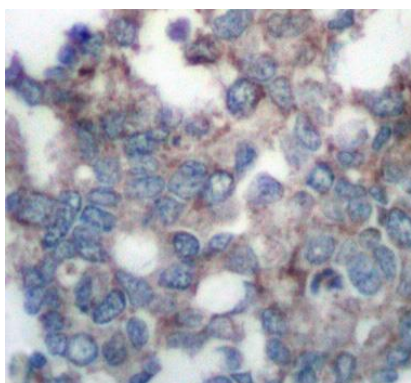
Store at -20°C. Avoid freeze / thaw cycles. Buffer: PBS with 0.02% sodium azide, 50% glycerol, pH7.3.

## Product Images

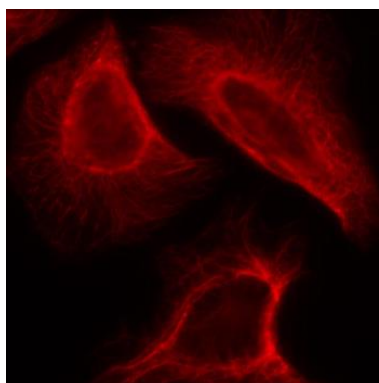
---



Western blot analysis of extracts from MCF cells using Phospho-p70 S6 kinase-S424 antibody (CABP0253). Secondary antibody: HRP Goat Anti-Rabbit IgG (H+L) (CABS014) at 1:10000 dilution. Lysates/proteins: 25ug per lane. Blocking buffer: 3% BSA.



Immunohistochemistry of paraffin-embedded human breast carcinoma using Phospho-p70 S6 kinase-S424 antibody (CABP0253).



Immunofluorescence analysis of methanol-fixed HeLa cells showing cytoplasmic, centrosomal and nuclear staining using Phospho-p70 S6 kinase-S424 antibody (CABP0253).