

# Phospho-GAB1-Y627 Rabbit Polyclonal Antibody



CABP0256

---

## Product Information

### Size:

50uL, 100uL, 200uL

### Observed MW:

125kDa

### Calculated MW:

76kDa/80kDa

### Applications:

WB IF

### Reactivity:

Human, Mouse

## Protein Background

The protein encoded by this gene is a member of the IRS1-like multisubstrate docking protein family. It is an important mediator of branching tubulogenesis and plays a central role in cellular growth response, transformation and apoptosis. Two transcript variants encoding different isoforms have been found for this gene.

## Immunogen information

### Gene ID:

2549

### Uniprot

Q13480

### Synonyms:

GAB1; GRB2

## Antibody Information

### Recommended dilutions:

WB 1:500 - 1:2000 IF 1:100  
- 1:200

### Source:

Rabbit

### Isotype:

IgG

### Purification:

Affinity purification

### Immunogen:

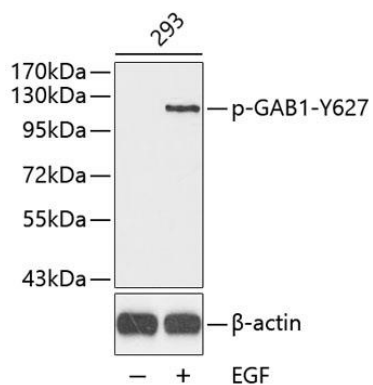
A phospho specific peptide corresponding to residues surrounding Y627 of human GAB1

### Storage:

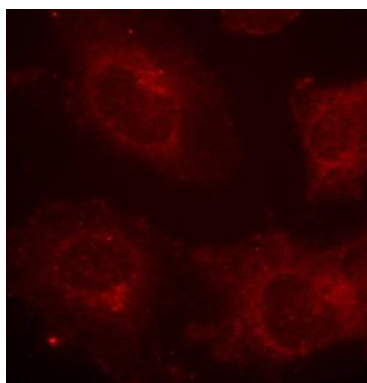
Store at -20°C. Avoid freeze / thaw cycles. Buffer: PBS with 0.02% sodium azide, 50% glycerol, pH7.3.

## Product Images

---



Western blot analysis of extracts from 293 cells using Phospho-GAB1-Y627 antibody (CABP0256). Secondary antibody: HRP Goat Anti-Rabbit IgG (H+L) (CABS014) at 1:10000 dilution. Lysates/proteins: 25ug per lane. Blocking buffer: 3% BSA.



Immunofluorescence analysis of methanol-fixed HeLa cells using Phospho-GAB1-Y627 antibody (CABP0256).