

Phospho-Syk-Y323 Rabbit Polyclonal Antibody



CABP0291

Product Information

Size:

50uL, 100uL, 200uL

Observed MW:

72kDa

Calculated MW:

69kDa/72kDa

Applications:

WB IHC IF

Reactivity:

Human

Antibody Information

Recommended dilutions:

WB 1:500 - 1:2000 IHC 1:50
- 1:100 IF 1:100 - 1:200

Source:

Rabbit

Isotype:

IgG

Purification:

Affinity purification

Protein Background

This gene encodes a member of the family of non-receptor type Tyr protein kinases. This protein is widely expressed in hematopoietic cells and is involved in coupling activated immunoreceptors to downstream signaling events that mediate diverse cellular responses, including proliferation, differentiation, and phagocytosis. It is thought to be a modulator of epithelial cell growth and a potential tumour suppressor in human breast carcinomas. Alternatively spliced transcript variants encoding different isoforms have been found for this gene.

Immunogen information

Gene ID:

6850

Uniprot

P43405

Synonyms:

SYK; p72-Syk

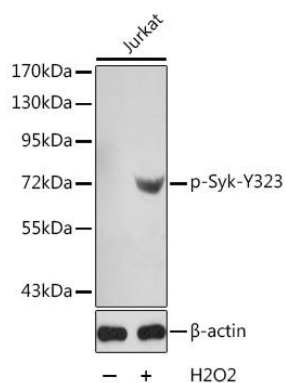
Immunogen:

A phospho specific peptide corresponding to residues surrounding Y323 of human Syk

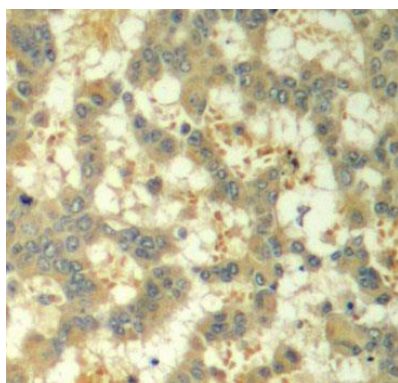
Storage:

Store at -20°C. Avoid freeze / thaw cycles. Buffer: PBS with 0.02% sodium azide, 50% glycerol, pH7.3.

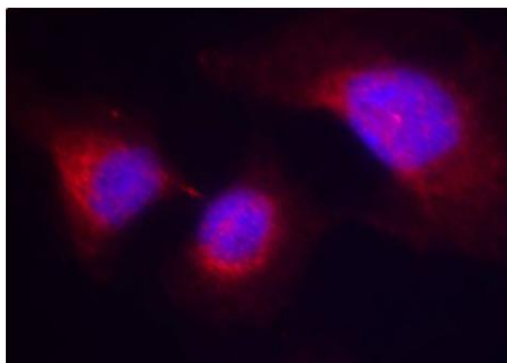
Product Images



Western blot analysis of extracts from Jurkat cells using phospho-Syk-Y323 antibody (CABP0291). Secondary antibody: HRP Goat Anti-Rabbit IgG (H+L) (CABS014) at 1:10000 dilution. Lysates/proteins: 25ug per lane. Blocking buffer: 3% BSA.



Immunohistochemistry of paraffin-embedded human breast carcinoma using Phospho-Syk-Y323 antibody (CABP0291).



Immunofluorescence analysis of methanol-fixed HeLa cells using Phospho-Syk-Y323 antibody (CABP0291).