

# Phospho-ABL1-Y412 Rabbit Polyclonal Antibody



CABP0303

## Product Information

### Size:

50uL, 100uL, 200uL

### Observed MW:

### Calculated MW:

122kDa/124kDa

### Applications:

IHC IF

### Reactivity:

Human, Mouse, Rat

## Antibody Information

### Recommended dilutions:

IHC 1:50 - 1:100 IF 1:100 - 1:200

### Source:

Rabbit

### Isotype:

IgG

### Purification:

Affinity purification

## Protein Background

This gene is a protooncogene that encodes a protein tyrosine kinase involved in a variety of cellular processes, including cell division, adhesion, differentiation, and response to stress. The activity of the protein is negatively regulated by its SH3 domain, whereby deletion of the region encoding this domain results in an oncogene. The ubiquitously expressed protein has DNA-binding activity that is regulated by CDC2-mediated phosphorylation, suggesting a cell cycle function. This gene has been found fused to a variety of translocation partner genes in various leukemias, most notably the t(9;22) translocation that results in a fusion with the 5' end of the breakpoint cluster region gene (BCR; MIM:151410). Alternative splicing of this gene results in two transcript variants, which contain alternative first exons that are spliced to the remaining common exons.

## Immunogen information

### Gene ID:

25

### Uniprot

P00519

### Synonyms:

ABL; JTK7; p150; c-ABL; v-abl; CHDSKM; c-ABL1; ABL1; c-Abl; bcr/abl

### Immunogen:

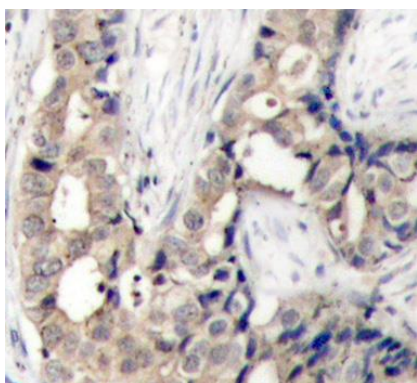
A phospho specific peptide corresponding to residues surrounding Y412 of human ABL1

### Storage:

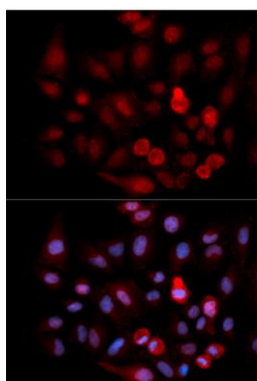
Store at -20°C. Avoid freeze / thaw cycles. Buffer: PBS with 0.02% sodium azide, 50% glycerol, pH7.3.

## Product Images

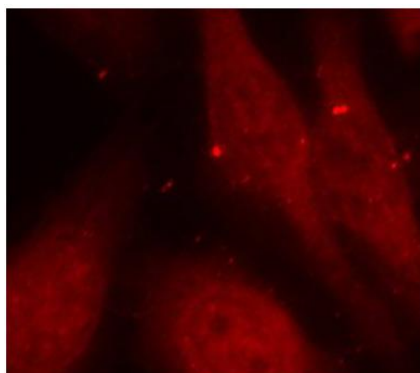
---



Immunohistochemistry of paraffin-embedded human breast carcinoma using Phospho-ABL1-Y412 antibody (CABP0303).



Immunofluorescence analysis of MCF-7 cells using Phospho-ABL1-Y412 antibody (CABP0303). Blue: DAPI for nuclear staining.



Immunofluorescence analysis of methanol-fixed HeLa cells using Phospho-ABL1-Y412 antibody (CABP0303).