

Phospho-Bcl-2-S70 Rabbit Polyclonal Antibody



CABP0315

Product Information

Size:

50uL, 100uL, 200uL

Observed MW:

Calculated MW:

22kDa/26kDa

Applications:

IHC

Reactivity:

Human

Antibody Information

Recommended dilutions:

IHC 1:50 - 1:100

Source:

Rabbit

Isotype:

IgG

Purification:

Affinity purification

Protein Background

This gene encodes an integral outer mitochondrial membrane protein that blocks the apoptotic death of some cells such as lymphocytes. Constitutive expression of BCL2, such as in the case of translocation of BCL2 to Ig heavy chain locus, is thought to be the cause of follicular lymphoma. Alternative splicing results in multiple transcript variants.

Immunogen information

Gene ID:

596

Uniprot

P10415

Synonyms:

Bcl-2; PPP1R50; BCL2

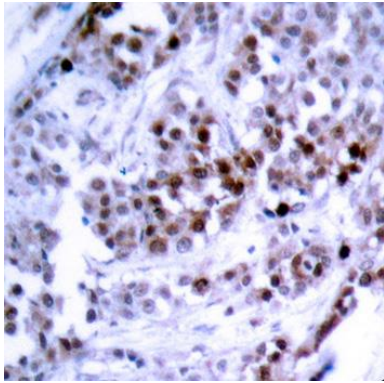
Immunogen:

A phospho specific peptide corresponding to residues surrounding S70 of human Bcl-2

Storage:

Store at -20°C. Avoid freeze / thaw cycles. Buffer: PBS with 0.02% sodium azide, 50% glycerol, pH7.3.

Product Images



Immunohistochemistry of paraffin-embedded human breast carcinoma, using Phospho-Bcl-2-S70 antibody (CABP0315).