

# Phospho-CDK1-T161 Rabbit Polyclonal Antibody



CABP0324

## Product Information

### Size:

20uL, 50uL, 100uL, 200uL

### Observed MW:

34kDa

### Calculated MW:

27kDa/34kDa

### Applications:

WB IHC IF IP

### Reactivity:

Human, Mouse

## Antibody Information

### Recommended dilutions:

WB 1:500 - 1:2000 IHC 1:50

- 1:200 IF 1:50 - 1:200 IP

1:50 - 1:100

### Source:

Rabbit

### Isotype:

IgG

### Purification:

Affinity purification

## Protein Background

The protein encoded by this gene is a member of the Ser/Thr protein kinase family. This protein is a catalytic subunit of the highly conserved protein kinase complex known as M-phase promoting factor (MPF), which is essential for G1/S and G2/M phase transitions of eukaryotic cell cycle. Mitotic cyclins stably associate with this protein and function as regulatory subunits. The kinase activity of this protein is controlled by cyclin accumulation and destruction through the cell cycle. The phosphorylation and dephosphorylation of this protein also play important regulatory roles in cell cycle control. Alternatively spliced transcript variants encoding different isoforms have been found for this gene.

## Immunogen information

### Gene ID:

983

### Uniprot

P06493

### Synonyms:

CDK1; CDC2; CDC28A; P34CDC2

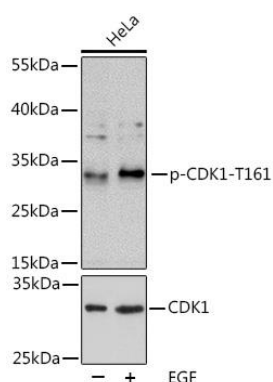
### Immunogen:

A synthetic phosphorylated peptide around T161 of human CDK1 (NP\_001777.1).

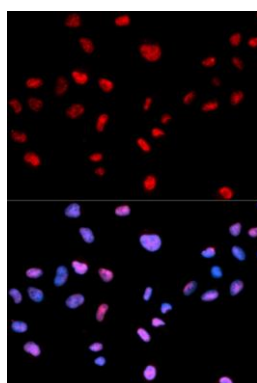
### Storage:

Store at -20°C. Avoid freeze / thaw cycles. Buffer: PBS with 0.02% sodium azide, 50% glycerol, pH7.3.

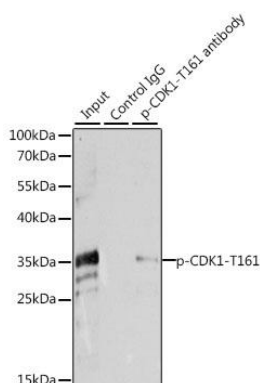
## Product Images



Western blot analysis of extracts of HeLa cells, using Phospho-CDK1-T161 pAb (CABP0324) at 1:1000 dilution or CDK1 antibody (CAB12414). HeLa cells were treated by EGF (100ng/mL) for 30 minutes after serum-starvation overnight. Secondary antibody: HRP Goat Anti-Rabbit IgG (H+L) (CABS014) at 1:10000 dilution. Lysates/proteins: 25ug per lane. Blocking buffer: 3% BSA. Detection: ECL Basic Kit (CABM00020). Exposure time: 5min.



Immunofluorescence analysis of MCF-7 cells using Phospho-CDK1-T161 antibody (CABP0324). Blue: DAPI for nuclear staining.



Immunoprecipitation analysis of 200ug extracts of HeLa cells, using 3 ug Phospho-CDK1-T161 pAb (CABP0324). Western blot was performed from the immunoprecipitate using Phospho-CDK1-T161 pAb (CABP0324) at a dilution of 1:1000. HeLa cells were treated by EGF (100 ng/mL) at 37°C for 30 minutes after serum-starvation overnight.