

Phospho-CFL1-Y139 Rabbit Polyclonal Antibody



CABP0330

Product Information

Size:

50uL, 100uL, 200uL

Observed MW:

Calculated MW:

18kDa

Applications:

IHC

Reactivity:

Human, Mouse, Rat

Antibody Information

Recommended dilutions:

IHC 1:50 - 1:100

Source:

Rabbit

Isotype:

IgG

Purification:

Affinity purification

Protein Background

The protein encoded by this gene can polymerize and depolymerize F-actin and G-actin in a pH-dependent manner. Increased phosphorylation of this protein by LIM kinase aids in Rho-induced reorganization of the actin cytoskeleton. Cofilin is a widely distributed intracellular actin-modulating protein that binds and depolymerizes filamentous F-actin and inhibits the polymerization of monomeric G-actin in a pH-dependent manner. It is involved in the translocation of actin-cofilin complex from cytoplasm to nucleus.[supplied by OMIM, Apr 2004]

Immunogen information

Gene ID:

1072

Uniprot

P23528

Synonyms:

CFL1; CFL; HEL-S-15; cofilin; cofilin-1

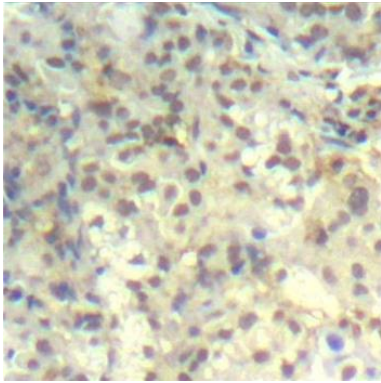
Immunogen:

A phospho specific peptide corresponding to residues surrounding Y139 of human CFL1

Storage:

Store at -20°C. Avoid freeze / thaw cycles. Buffer: PBS with 0.02% sodium azide, 50% glycerol, pH7.3.

Product Images



Immunohistochemistry of paraffin-embedded human lung carcinoma using Phospho-CFL1-Y139 antibody (CABP0330).