

Phospho-CREB1-S133 Rabbit Polyclonal Antibody



CABP0333

Product Information

Size:

20uL, 50uL, 100uL, 200uL

Observed MW:

43kDa

Calculated MW:

25kDa/35kDa/36kDa

Applications:

WB IHC

Reactivity:

Human, Mouse, Rat

Protein Background

This gene encodes a transcription factor that is a member of the leucine zipper family of DNA binding proteins. This protein binds as a homodimer to the cAMP-responsive element, an octameric palindrome. The protein is phosphorylated by several protein kinases, and induces transcription of genes in response to hormonal stimulation of the cAMP pathway. Alternate splicing of this gene results in several transcript variants encoding different isoforms.

Immunogen information

Gene ID:

1385

Uniprot

P16220

Synonyms:

CREB1; CREB; CREB-1

Antibody Information

Recommended dilutions:

WB 1:500 - 1:1000 IHC 1:50
- 1:100

Source:

Rabbit

Isotype:

IgG

Purification:

Affinity purification

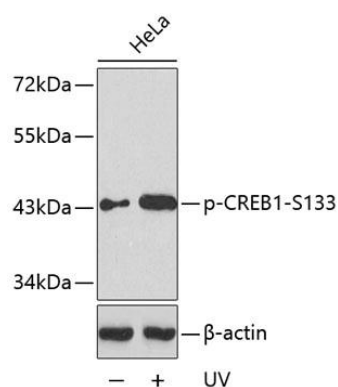
Immunogen:

A phospho specific peptide corresponding to residues surrounding S133 of human CREB1

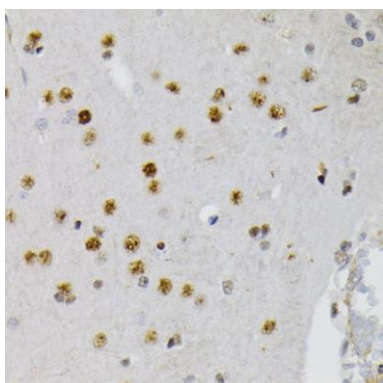
Storage:

Store at -20°C. Avoid freeze / thaw cycles. Buffer: PBS with 0.02% sodium azide, 50% glycerol, pH7.3.

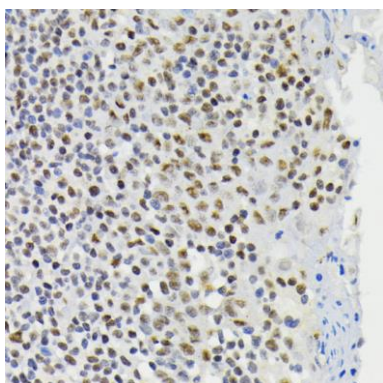
Product Images



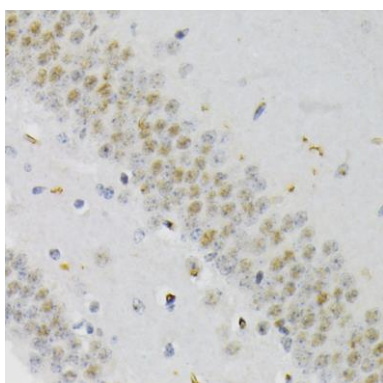
Western blot analysis of extracts from HeLa cells untreated or treated with UV, using Phospho-CREB1-S133 antibody (CABP0333). Secondary antibody: HRP Goat Anti-Rabbit IgG (H+L) (CABS014) at 1:10000 dilution. Lysates/proteins: 25ug per lane. Blocking buffer: 3% BSA.



Immunohistochemistry of paraffin-embedded rat brain using Phospho-CREB1-S133 antibody (CABP0333) at dilution of 1:200 (40x lens).



Immunohistochemistry of paraffin-embedded human tonsil using Phospho-CREB1-S133 antibody (CABP0333) at dilution of 1:200 (40x lens).



Immunohistochemistry of paraffin-embedded mouse brain using Phospho-CREB1-S133 antibody (CABP0333) at dilution of 1:200 (40x lens).