

Phospho-CKII Alpha-T360/S362 Rabbit Polyclonal Antibody

CABP0335



Product Information

Size:

50uL, 100uL, 200uL

Observed MW:

45kDa

Calculated MW:

29kDa/45kDa

Applications:

WB

Reactivity:

Human, Mouse, Rat

Antibody Information

Recommended dilutions:

WB 1:500 - 1:2000

Source:

Rabbit

Isotype:

IgG

Purification:

Affinity purification

Protein Background

Casein kinase II is a serine/threonine protein kinase that phosphorylates acidic proteins such as casein. It is involved in various cellular processes, including cell cycle control, apoptosis, and circadian rhythm. The kinase exists as a tetramer and is composed of an alpha, an alpha-prime, and two beta subunits. The alpha subunits contain the catalytic activity while the beta subunits undergo autophosphorylation. The protein encoded by this gene represents the alpha subunit. While this gene is found on chromosome 20, a related transcribed pseudogene is found on chromosome 11. Three transcript variants encoding two different proteins have been found for this gene.

Immunogen information

Gene ID:

1457

Uniprot

P68400

Synonyms:

CK2A1; CKII; CSNK2A3; OCNDS; CKII alpha; CSNK2A1; Cka1; Cka2

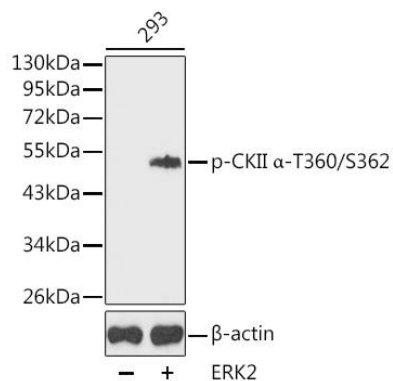
Immunogen:

A phospho specific peptide corresponding to residues surrounding T360/S362 of human CKII Alpha

Storage:

Store at -20°C. Avoid freeze / thaw cycles. Buffer: PBS with 0.02% sodium azide, 50% glycerol, pH7.3.

Product Images



Western blot analysis of extracts from 293 cells, using Phospho-CKII beta-T360/S362 antibody (CABP0335). Secondary antibody: HRP Goat Anti-Rabbit IgG (H+L) (CABS014) at 1:10000 dilution. Lysates/proteins: 25ug per lane. Blocking buffer: 3% BSA.