

Phospho-EFNB2-Y330 Rabbit Polyclonal Antibody



CABP0339

Product Information

Size:

50uL, 100uL, 200uL

Observed MW:

55kDa

Calculated MW:

36kDa

Applications:

WB

Reactivity:

Human, Mouse

Protein Background

This gene encodes a member of the ephrin (EPH) family. The ephrins and EPH-related receptors comprise the largest subfamily of receptor protein-tyrosine kinases and have been implicated in mediating developmental events, especially in the nervous system and in erythropoiesis. Based on their structures and sequence relationships, ephrins are divided into the ephrin-A (EFNA) class, which are anchored to the membrane by a glycosylphosphatidylinositol linkage, and the ephrin-B (EFNB) class, which are transmembrane proteins. This gene encodes an EFNB class ephrin which binds to the EPHB4 and EPHA3 receptors.

Immunogen information

Gene ID:

1948

Uniprot

P52799

Synonyms:

EFNB2; EPLG5; HTKL; Htk-L; LERK5; ephrin-B2

Antibody Information

Recommended dilutions:

WB 1:500 - 1:2000

Source:

Rabbit

Isotype:

IgG

Purification:

Affinity purification

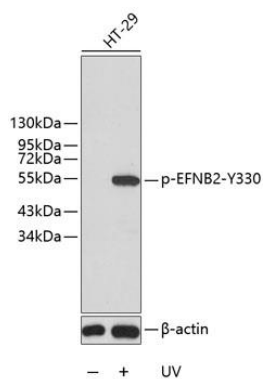
Immunogen:

A phospho specific peptide corresponding to residues surrounding Y330 of human EFNB2

Storage:

Store at -20°C. Avoid freeze / thaw cycles. Buffer: PBS with 0.02% sodium azide, 50% glycerol, pH7.3.

Product Images



Western blot analysis of extracts from HT29 cells, using Phospho-EFNB2-Y330 antibody (CABP0339). Secondary antibody: HRP Goat Anti-Rabbit IgG (H+L) (CABS014) at 1:10000 dilution. Lysates/proteins: 25ug per lane. Blocking buffer: 3% BSA.