

Phospho-EZR-Y353 Rabbit Polyclonal Antibody



CABP0349

Product Information

Size:

50uL, 100uL, 200uL

Observed MW:

80kDa

Calculated MW:

69kDa

Applications:

WB IHC

Reactivity:

Human

Protein Background

The cytoplasmic peripheral membrane protein encoded by this gene functions as a protein-tyrosine kinase substrate in microvilli. As a member of the ERM protein family, this protein serves as an intermediate between the plasma membrane and the actin cytoskeleton. This protein plays a key role in cell surface structure adhesion, migration and organization, and it has been implicated in various human cancers. A pseudogene located on chromosome 3 has been identified for this gene. Alternatively spliced variants have also been described for this gene.

Immunogen information

Gene ID:

7430

Uniprot

P15311

Synonyms:

CVIL; CVL; HEL-S-105; VIL2; EZR; Ezrin; ezrin

Antibody Information

Recommended dilutions:

WB 1:500 - 1:2000 IHC 1:50
- 1:100

Source:

Rabbit

Isotype:

IgG

Purification:

Affinity purification

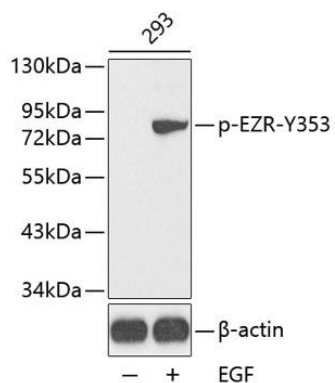
Immunogen:

A phospho specific peptide corresponding to residues surrounding Y353 of human EZR

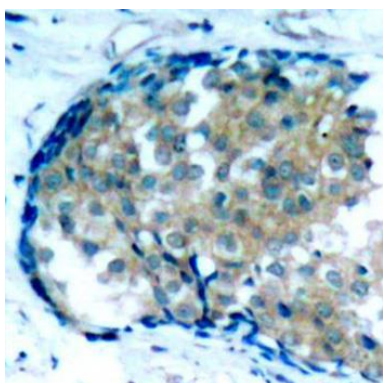
Storage:

Store at -20°C. Avoid freeze / thaw cycles. Buffer: PBS with 0.02% sodium azide, 50% glycerol, pH7.3.

Product Images



Western blot analysis of extracts from 293 cells, using Phospho-EZR-Y353 antibody (CABP0349). Secondary antibody: HRP Goat Anti-Rabbit IgG (H+L) (CABS014) at 1:10000 dilution. Lysates/proteins: 25ug per lane. Blocking buffer: 3% BSA.



Immunohistochemistry of paraffin-embedded human breast carcinoma using Phospho-EZR-Y353 antibody (CABP0349).