

Phospho-G3BP1-S232 Rabbit Polyclonal Antibody



CABP0352

Product Information

Size:

50uL, 100uL, 200uL

Observed MW:

52kDa

Calculated MW:

13kDa/52kDa

Applications:

WB IHC IF

Reactivity:

Human

Protein Background

This gene encodes one of the DNA-unwinding enzymes which prefers partially unwound 3'-tailed substrates and can also unwind partial RNA/DNA and RNA/RNA duplexes in an ATP-dependent fashion. This enzyme is a member of the heterogeneous nuclear RNA-binding proteins and is also an element of the Ras signal transduction pathway. It binds specifically to the Ras-GTPase-activating protein by associating with its SH3 domain. Several alternatively spliced transcript variants of this gene have been described, but the full-length nature of some of these variants has not been determined.

Immunogen information

Gene ID:

10146

Uniprot

Q13283

Synonyms:

G3BP1; G3BP; HDH-VIII

Antibody Information

Recommended dilutions:

WB 1:500 - 1:2000 IHC 1:50
- 1:100 IF 1:100 - 1:200

Source:

Rabbit

Isotype:

IgG

Purification:

Affinity purification

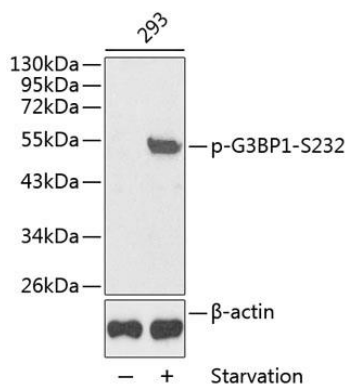
Immunogen:

A phospho specific peptide corresponding to residues surrounding S232 of human G3BP1

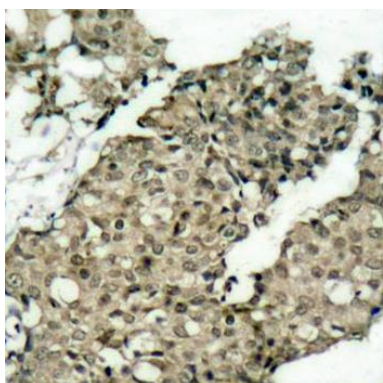
Storage:

Store at -20°C. Avoid freeze / thaw cycles. Buffer: PBS with 0.02% sodium azide, 50% glycerol, pH7.3.

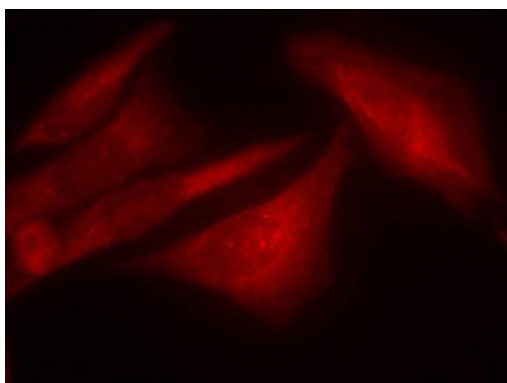
Product Images



Western blot analysis of extracts from 293 cells, using Phospho-G3BP1-S232 antibody (CABP0352). Secondary antibody: HRP Goat Anti-Rabbit IgG (H+L) (CABS014) at 1:10000 dilution. Lysates/proteins: 25ug per lane. Blocking buffer: 3% BSA.



Immunohistochemistry of paraffin-embedded human breast carcinoma using Phospho-G3BP1-S232 antibody (CABP0352).



Immunofluorescence analysis of methanol-fixed HeLa cells using Phospho-G3BP1-S232 antibody (CABP0352).