

# Phospho-GATA1-S310 Rabbit Polyclonal Antibody

## CABP0354



### Product Information

**Size:**

50uL, 100uL, 200uL

**Observed MW:**

43kDa

**Calculated MW:**

34kDa/35kDa/42kDa

**Applications:**

WB IF

**Reactivity:**

Human, Mouse, Rat

### Antibody Information

**Recommended dilutions:**

WB 1:500 - 1:2000 IF 1:100  
- 1:200

**Source:**

Rabbit

**Isotype:**

IgG

**Purification:**

Affinity purification

### Protein Background

This gene encodes a protein which belongs to the GATA family of transcription factors. The protein plays an important role in erythroid development by regulating the switch of fetal hemoglobin to adult hemoglobin. Mutations in this gene have been associated with X-linked dyserythropoietic anemia and thrombocytopenia.

### Immunogen information

**Gene ID:**

2623

**Uniprot**

P15976

**Synonyms:**

GATA1; ERYF1; GATA-1; GF-1; GF1; NF-E1; NFE1; XLANP; XLTDA; XLTT

**Immunogen:**

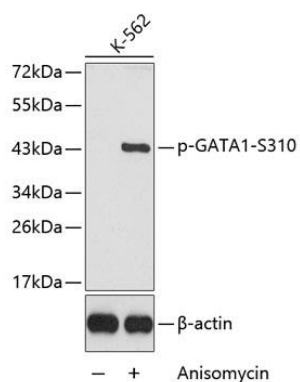
A phospho specific peptide corresponding to residues surrounding S310 of human GATA1

**Storage:**

Store at -20°C. Avoid freeze / thaw cycles. Buffer: PBS with 0.02% sodium azide, 50% glycerol, pH7.3.

## Product Images

---



Western blot analysis of extracts from K-562 cells, using Phospho-GATA1-S310 antibody (CABP0354). Secondary antibody: HRP Goat Anti-Rabbit IgG (H+L) (CABS014) at 1:10000 dilution. Lysates/proteins: 25ug per lane. Blocking buffer: 3% BSA.