

# Phospho-GRIA1-S836 Rabbit Polyclonal Antibody



CABP0356

## Product Information

### Size:

50uL, 100uL, 200uL

### Observed MW:

102kDa

### Calculated MW:

92kDa/93kDa/101kDa/102kDa

### Applications:

WB

### Reactivity:

Human, Mouse, Rat

## Antibody Information

### Recommended dilutions:

WB 1:500 - 1:2000

### Source:

Rabbit

### Isotype:

IgG

### Purification:

Affinity purification

## Protein Background

Glutamate receptors are the predominant excitatory neurotransmitter receptors in the mammalian brain and are activated in a variety of normal neurophysiologic processes. These receptors are heteromeric protein complexes with multiple subunits, each possessing transmembrane regions, and all arranged to form a ligand-gated ion channel. The classification of glutamate receptors is based on their activation by different pharmacologic agonists. This gene belongs to a family of alpha-amino-3-hydroxy-5-methyl-4-isoxazole propionate (AMPA) receptors. Alternatively spliced transcript variants encoding different isoforms have been found for this gene.

## Immunogen information

### Gene ID:

2890

### Uniprot

P42261

### Synonyms:

GRIA1; GLUH1; GLUR1; GLURA; GluA1; HBGR1; GluR1

### Immunogen:

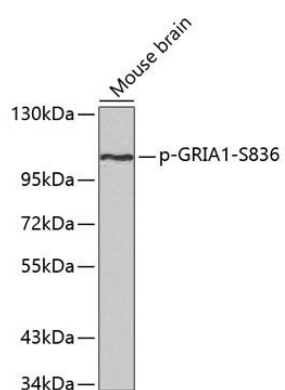
A phospho specific peptide corresponding to residues surrounding S836 of human GRIA1

### Storage:

Store at -20°C. Avoid freeze / thaw cycles. Buffer: PBS with 0.02% sodium azide, 50% glycerol, pH7.3.

## Product Images

---



Western blot analysis of extracts from mouse brain, using phospho-GRIA1-S836 antibody (CABP0356). Secondary antibody: HRP Goat Anti-Rabbit IgG (H+L) (CABS014) at 1:10000 dilution. Lysates/proteins: 25ug per lane. Blocking buffer: 3% BSA.