

Phospho-IGF1R-Y1161 Rabbit Polyclonal Antibody

CABP0367



Product Information

Size:

20uL, 50uL, 100uL, 200uL

Observed MW:

95kDa

Calculated MW:

154kDa

Applications:

WB IHC IF

Reactivity:

Human, Mouse, Rat

Protein Background

This receptor binds insulin-like growth factor with a high affinity. It has tyrosine kinase activity. The insulin-like growth factor I receptor plays a critical role in transformation events. Cleavage of the precursor generates alpha and beta subunits. It is highly overexpressed in most malignant tissues where it functions as an anti-apoptotic agent by enhancing cell survival. Alternatively spliced transcript variants encoding distinct isoforms have been found for this gene.

Immunogen information

Gene ID:

3480

Uniprot

P08069

Synonyms:

IGF1R; CD221; IGFIR; IGFR; JTK13

Antibody Information

Recommended dilutions:

WB 1:500 - 1:2000 IHC 1:50
- 1:100 IF 1:100 - 1:200

Source:

Rabbit

Isotype:

IgG

Purification:

Affinity purification

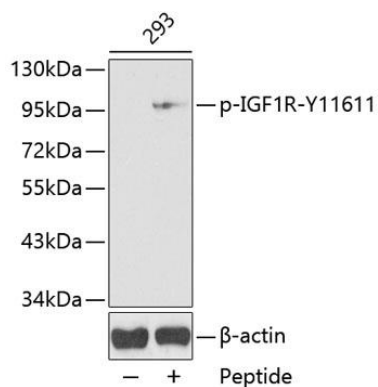
Immunogen:

A phospho specific peptide corresponding to residues surrounding Y1161 of human IGF1R

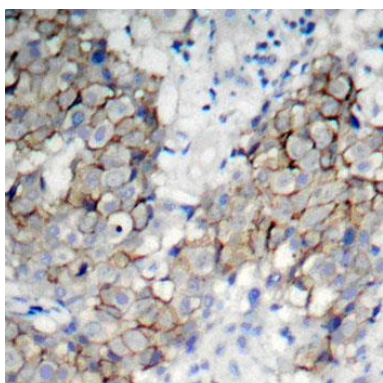
Storage:

Store at -20°C. Avoid freeze / thaw cycles. Buffer: PBS with 0.02% sodium azide, 50% glycerol, pH7.3.

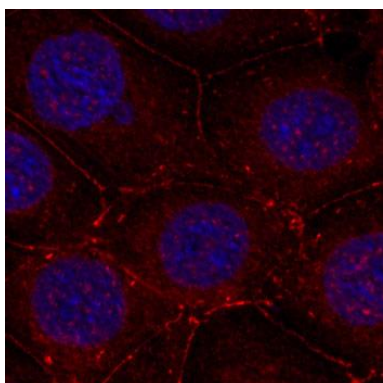
Product Images



Western blot analysis of extracts from 293 cells, using Phospho-IGF1R-Y1161 antibody (CABP0367). Secondary antibody: HRP Goat Anti-Rabbit IgG (H+L) (CABS014) at 1:10000 dilution. Lysates/proteins: 25ug per lane. Blocking buffer: 3% BSA.



Immunohistochemistry of paraffin-embedded human breast carcinoma using Phospho-IGF1R-Y1161 antibody (CABP0367).



Immunofluorescence analysis of methanol-fixed MCF-7 cells using Phospho-IGF1R-Y1161 antibody (CABP0367).