

Phospho-IKKBeta-Y199 Rabbit Polyclonal Antibody

CABP0369



Product Information

Size:

50uL, 100uL, 200uL

Observed MW:**Calculated MW:**

29kDa/79kDa/85kDa/86kDa

Applications:

IF

Reactivity:

Human, Mouse, Rat

Antibody Information

Recommended dilutions:

IF 1:100 - 1:200

Source:

Rabbit

Isotype:

IgG

Purification:

Affinity purification

Protein Background

The protein encoded by this gene phosphorylates the inhibitor in the inhibitor/NF-kappa-B complex, causing dissociation of the inhibitor and activation of NF-kappa-B. The encoded protein itself is found in a complex of proteins. Several transcript variants, some protein-coding and some not, have been found for this gene.

Immunogen information

Gene ID:

3551

Uniprot

O14920

Synonyms:

IKKBK; IKK-beta; IKK2; IKKB; IMD15; NFKBIKB; IKK beta

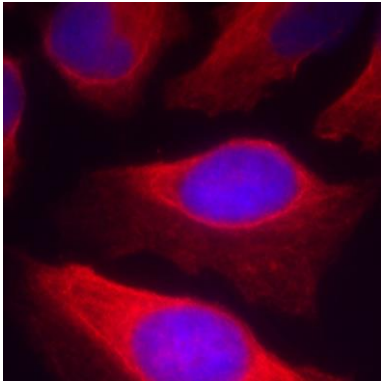
Immunogen:

A phospho specific peptide corresponding to residues surrounding Y199 of human IKKBeta

Storage:

Store at -20°C. Avoid freeze / thaw cycles. Buffer: PBS with 0.02% sodium azide, 50% glycerol, pH7.3.

Product Images



Immunofluorescence analysis of methanol-fixed HeLa cells using Phospho-IKKb-Y199 antibody (CABP0369).