

# Phospho-MAPKAPK2-T334 Rabbit Polyclonal Antibody

## CABP0396



### Product Information

**Size:**

20uL, 50uL, 100uL, 200uL

**Observed MW:**

55kDa

**Calculated MW:**

42kDa/45kDa

**Applications:**

WB IHC IF

**Reactivity:**

Human, Mouse, Rat

### Protein Background

This gene encodes a member of the Ser/Thr protein kinase family. This kinase is regulated through direct phosphorylation by p38 MAP kinase. In conjunction with p38 MAP kinase, this kinase is known to be involved in many cellular processes including stress and inflammatory responses, nuclear export, gene expression regulation and cell proliferation. Heat shock protein HSP27 was shown to be one of the substrates of this kinase in vivo. Two transcript variants encoding two different isoforms have been found for this gene.

### Immunogen information

**Gene ID:**

9261

**Uniprot**

P49137

**Synonyms:**

MAPKAPK2; MAPKAP-K2; MK-2; MK2

### Antibody Information

**Recommended dilutions:**

WB 1:500 - 1:2000 IHC 1:50  
- 1:100 IF 1:100 - 1:200

**Source:**

Rabbit

**Isotype:**

IgG

**Purification:**

Affinity purification

**Immunogen:**

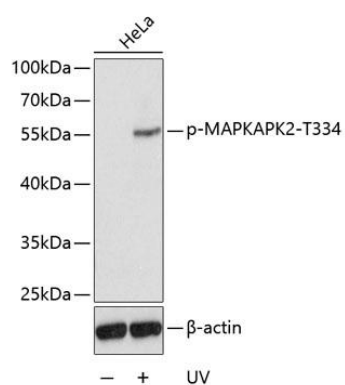
A phospho specific peptide corresponding to residues surrounding T334 of human MAPKAPK2

**Storage:**

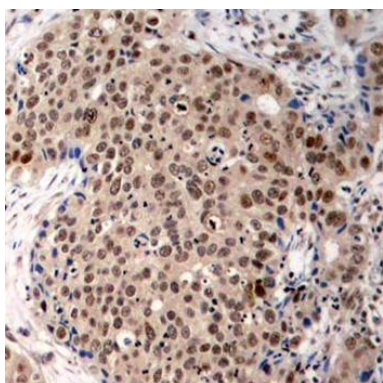
Store at -20°C. Avoid freeze / thaw cycles. Buffer: PBS with 0.02% sodium azide, 50% glycerol, pH7.3.

## Product Images

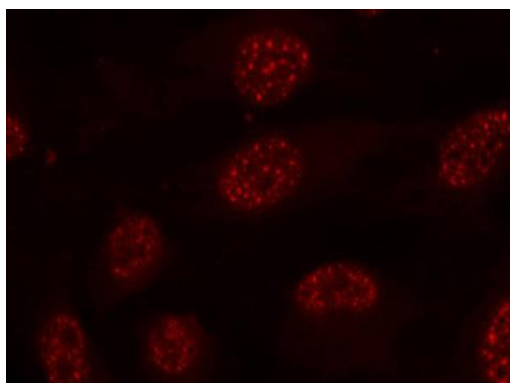
---



Western blot analysis of extracts from HeLa cells, using Phospho-MAPKAPK2-T334 antibody (CABP0396). Secondary antibody: HRP Goat Anti-Rabbit IgG (H+L) (CABS014) at 1:10000 dilution. Lysates/proteins: 25ug per lane. Blocking buffer: 3% BSA.



Immunohistochemistry of paraffin-embedded human breast carcinoma using Phospho-MAPKAPK2-T334 antibody (CABP0396).



Immunofluorescence analysis of methanol-fixed HeLa cells using Phospho-MAPKAPK2-T334 antibody (CABP0396).