

# Phospho-Tau-S262 Rabbit Polyclonal Antibody



CABP0397

## Product Information

### Size:

50uL, 100uL, 200uL

### Observed MW:

45kDa

### Calculated MW:

32-45kDa/78- 80kDa

### Applications:

WB IHC IF

### Reactivity:

Human, Mouse, Rat

## Antibody Information

### Recommended dilutions:

WB 1:500 - 1:2000 IHC 1:50  
- 1:100 IF 1:100 - 1:200

### Source:

Rabbit

### Isotype:

IgG

### Purification:

Affinity purification

## Protein Background

This gene encodes the microtubule-associated protein tau (MAPT) whose transcript undergoes complex, regulated alternative splicing, giving rise to several mRNA species. MAPT transcripts are differentially expressed in the nervous system, depending on stage of neuronal maturation and neuron type. MAPT gene mutations have been associated with several neurodegenerative disorders such as Alzheimer's disease, Pick's disease, frontotemporal dementia, cortico-basal degeneration and progressive supranuclear palsy.

## Immunogen information

### Gene ID:

4137

### Uniprot

P10636

### Synonyms:

DDPAC; FTDP-17; MAPTL; MSTD; MTBT1; MTBT2; PPND; PPP1R103;  
TAU; MAPT; Tau

### Immunogen:

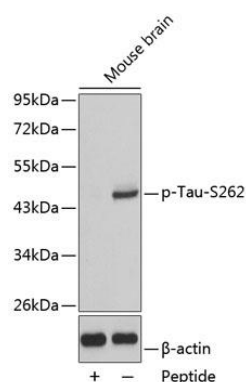
A phospho specific peptide corresponding to residues surrounding  
S262 of human Tau

### Storage:

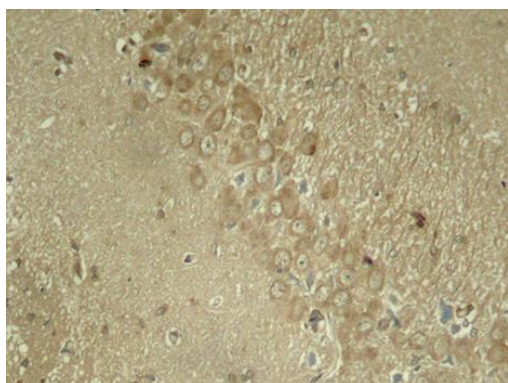
Store at -20°C. Avoid freeze / thaw cycles. Buffer: PBS with 0.02%  
sodium azide, 50% glycerol, pH7.3.

## Product Images

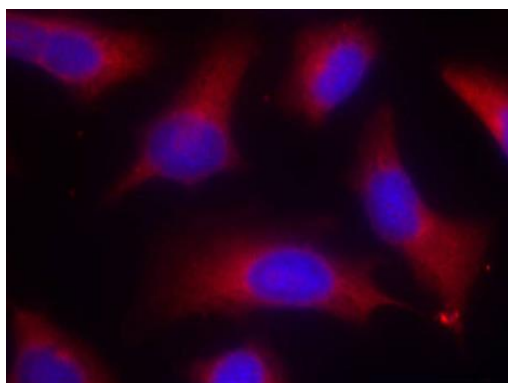
---



Western blot analysis of extracts from mouse brain tissue using Phospho-Tau-S262 antibody (CABP0397). Secondary antibody: HRP Goat Anti-Rabbit IgG (H+L) (CABS014) at 1:10000 dilution. Lysates/proteins: 25ug per lane. Blocking buffer: 3% BSA.



Immunohistochemistry of paraffin-embedded rat hippocampal region tissue from a model with Alzheimer using Phospho-Tau-S262 antibody (CABP0397).



Immunofluorescence analysis of methanol-fixed HeLa cells using Phospho-Tau-S262 antibody (CABP0397).