

Phospho-Tau-T181 Rabbit Polyclonal Antibody



CABP0399

Product Information

Size:

50uL, 100uL, 200uL

Observed MW:

70kDa

Calculated MW:

32-45kDa/78- 80kDa

Applications:

WB IHC

Reactivity:

Human, Mouse, Rat

Antibody Information

Recommended dilutions:

WB 1:500 - 1:2000 IHC 1:50
- 1:100

Source:

Rabbit

Isotype:

IgG

Purification:

Affinity purification

Protein Background

This gene encodes the microtubule-associated protein tau (MAPT) whose transcript undergoes complex, regulated alternative splicing, giving rise to several mRNA species. MAPT transcripts are differentially expressed in the nervous system, depending on stage of neuronal maturation and neuron type. MAPT gene mutations have been associated with several neurodegenerative disorders such as Alzheimer's disease, Pick's disease, frontotemporal dementia, cortico-basal degeneration and progressive supranuclear palsy.

Immunogen information

Gene ID:

4137

Uniprot

P10636

Synonyms:

DDPAC; FTDP-17; MAPTL; MSTD; MTBT1; MTBT2; PPND; PPP1R103;
TAU; MAPT; Tau

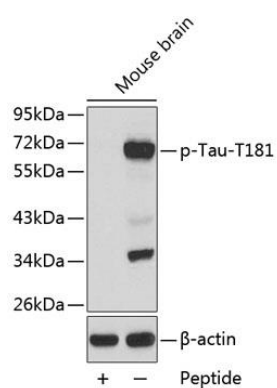
Immunogen:

A phospho specific peptide corresponding to residues surrounding
T181 of human Tau

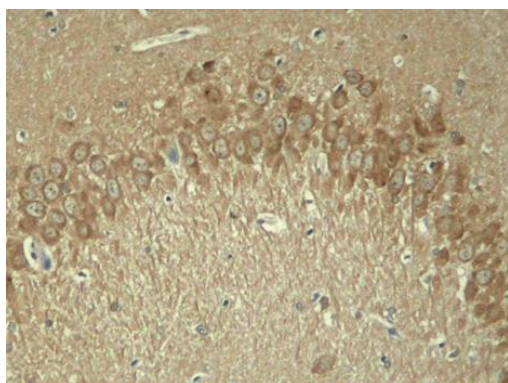
Storage:

Store at -20°C. Avoid freeze / thaw cycles. Buffer: PBS with 0.02%
sodium azide, 50% glycerol, pH7.3.

Product Images



Western blot analysis of extracts from mouse brain tissue using Phospho-Tau-T181 antibody (CABP0399). Secondary antibody: HRP Goat Anti-Rabbit IgG (H+L) (CABS014) at 1:10000 dilution. Lysates/proteins: 25ug per lane. Blocking buffer: 3% BSA.



Immunohistochemistry of paraffin-embedded rat hippocampal region tissue from a model with Alzheimer using Phospho-Tau-T181 antibody (CABP0399).