

Phospho-MARCKS-S158 Rabbit Polyclonal Antibody

CABP0402



Product Information

Size:

50uL, 100uL, 200uL

Observed MW:

85kDa

Calculated MW:

31kDa

Applications:

WB IF

Reactivity:

Human, Mouse, Rat

Protein Background

The protein encoded by this gene is a substrate for protein kinase C. It is localized to the plasma membrane and is an actin filament crosslinking protein. Phosphorylation by protein kinase C or binding to calcium-calmodulin inhibits its association with actin and with the plasma membrane, leading to its presence in the cytoplasm. The protein is thought to be involved in cell motility, phagocytosis, membrane trafficking and mitogenesis.

Immunogen information

Gene ID:

4082

Uniprot

P29966

Synonyms:

MARCKS; 80K-L; MACS; PKCSL; PRKCSL

Antibody Information

Recommended dilutions:

WB 1:500 - 1:2000 IF 1:100 - 1:200

Source:

Rabbit

Isotype:

IgG

Purification:

Affinity purification

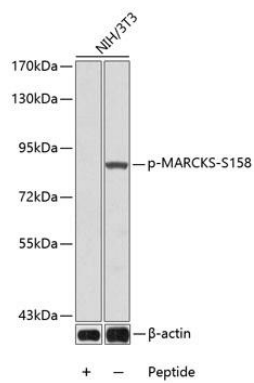
Immunogen:

A phospho specific peptide corresponding to residues surrounding S158 of human MARCKS

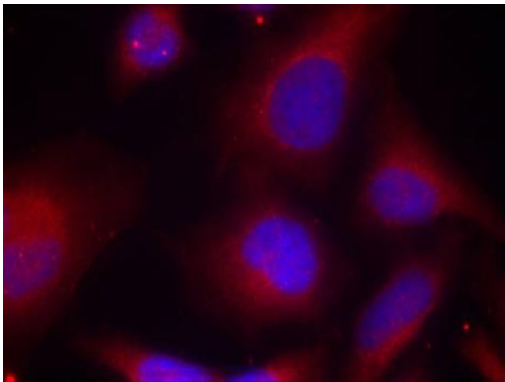
Storage:

Store at -20°C. Avoid freeze / thaw cycles. Buffer: PBS with 0.02% sodium azide, 50% glycerol, pH7.3.

Product Images



Western blot analysis of extracts from 3T3 cells using Phospho-MARCKS-S158 antibody (CABP0402). Secondary antibody: HRP Goat Anti-Rabbit IgG (H+L) (CABS014) at 1:10000 dilution. Lysates/proteins: 25ug per lane. Blocking buffer: 3% BSA.



Immunofluorescence analysis of methanol-fixed HeLa cells using Phospho-MARCKS-S158 antibody (CABP0402).