

# Phospho-MYL12A-S18 Rabbit Polyclonal Antibody

## CABP0412



### Product Information

**Size:**

50uL, 100uL, 200uL

**Observed MW:**

20kDa

**Calculated MW:**

19kDa

**Applications:**

WB IHC

**Reactivity:**

Human, Rat

### Protein Background

This gene encodes a nonsarcomeric myosin regulatory light chain. This protein is activated by phosphorylation and regulates smooth muscle and non-muscle cell contraction. This protein may also be involved in DNA damage repair by sequestering the transcriptional regulator apoptosis-antagonizing transcription factor (AATF)/Che-1 which functions as a repressor of p53-driven apoptosis. Alternate splicing results in multiple transcript variants. A pseudogene of this gene is found on chromosome 8.

### Immunogen information

**Gene ID:**

10627

**Uniprot**

P19105

**Synonyms:**

MYL12A; HEL-S-24; MLC-2B; MLCB; MRCL3; MRLC3; MYL2B

### Antibody Information

**Recommended dilutions:**

WB 1:500 - 1:2000 IHC 1:50 - 1:100

**Source:**

Rabbit

**Isotype:**

IgG

**Purification:**

Affinity purification

**Immunogen:**

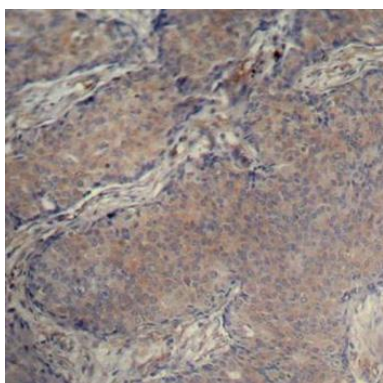
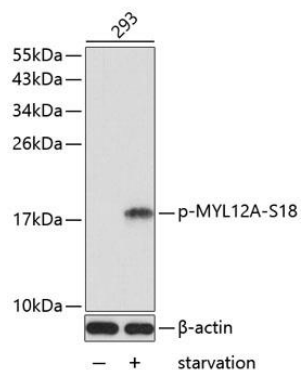
A phospho specific peptide corresponding to residues surrounding S18 of human MYL12A

**Storage:**

Store at -20°C. Avoid freeze / thaw cycles. Buffer: PBS with 0.02% sodium azide, 50% glycerol, pH7.3.

## Product Images

---



Western blot analysis of extracts from 293 cells untreated or treated with starvation using Phospho-MYL12A-S18 antibody (CABP0412). Secondary antibody: HRP Goat Anti-Rabbit IgG (H+L) (CABS014) at 1:10000 dilution. Lysates/proteins: 25ug per lane. Blocking buffer: 3% BSA.

Immunohistochemistry of paraffin-embedded human breast carcinoma using Phospho-MYL12A-S18 antibody (CABP0412).