

Phospho-NBN-S343 Rabbit Polyclonal Antibody



CABP0413

Product Information

Size:

50uL, 100uL, 200uL

Observed MW:

85kDa

Calculated MW:

84kDa

Applications:

WB

Reactivity:

Human

Protein Background

Mutations in this gene are associated with Nijmegen breakage syndrome, an autosomal recessive chromosomal instability syndrome characterized by microcephaly, growth retardation, immunodeficiency, and cancer predisposition. The encoded protein is a member of the MRE11/RAD50 double-strand break repair complex which consists of 5 proteins. This gene product is thought to be involved in DNA double-strand break repair and DNA damage-induced checkpoint activation.

Immunogen information

Gene ID:

4683

Uniprot

O60934

Synonyms:

NBN; AT-V1; AT-V2; ATV; NBS; NBS1; P95; nibrin

Antibody Information

Recommended dilutions:

WB 1:500 - 1:2000

Source:

Rabbit

Isotype:

IgG

Purification:

Affinity purification

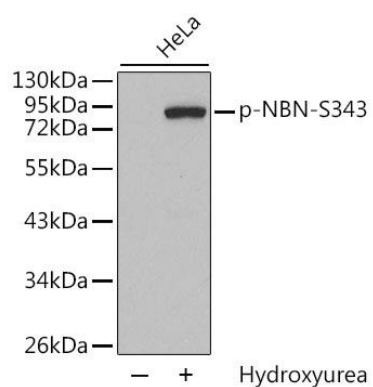
Immunogen:

A phospho specific peptide corresponding to residues surrounding S343 of human NBN

Storage:

Store at -20°C. Avoid freeze / thaw cycles. Buffer: PBS with 0.02% sodium azide, 50% glycerol, pH7.3.

Product Images



Western blot analysis of extracts from HeLa cells, using Phospho-NBN-S343 antibody (CABP0413). Secondary antibody: HRP Goat Anti-Rabbit IgG (H+L) (CABS014) at 1:10000 dilution. Lysates/proteins: 25ug per lane. Blocking buffer: 3% BSA.