

Phospho-NF2-S518 Rabbit Polyclonal Antibody



CABP0414

Product Information

Size:

50uL, 100uL, 200uL

Observed MW:

70kDa

Calculated MW:

19-30kDa/59-72kDa

Applications:

WB IF

Reactivity:

Human, Mouse, Rat

Antibody Information

Recommended dilutions:

WB 1:500 - 1:2000 IF 1:100
- 1:200

Source:

Rabbit

Isotype:

IgG

Purification:

Affinity purification

Protein Background

This gene encodes a protein that is similar to some members of the ERM (ezrin, radixin, moesin) family of proteins that are thought to link cytoskeletal components with proteins in the cell membrane. This gene product has been shown to interact with cell-surface proteins, proteins involved in cytoskeletal dynamics and proteins involved in regulating ion transport. This gene is expressed at high levels during embryonic development; in adults, significant expression is found in Schwann cells, meningeal cells, lens and nerve. Mutations in this gene are associated with neurofibromatosis type II which is characterized by nervous system and skin tumors and ocular abnormalities. Two predominant isoforms and a number of minor isoforms are produced by alternatively spliced transcripts.

Immunogen information

Gene ID:

4771

Uniprot

P35240

Synonyms:

NF2; ACN; BANF; SCH; merlin

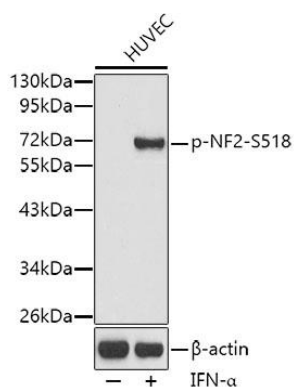
Immunogen:

A phospho specific peptide corresponding to residues surrounding S518 of human NF2

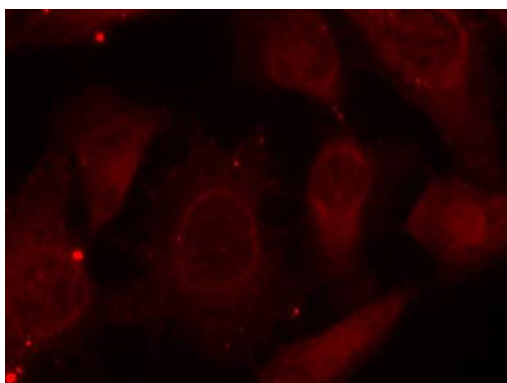
Storage:

Store at -20°C. Avoid freeze / thaw cycles. Buffer: PBS with 0.02% sodium azide, 50% glycerol, pH7.3.

Product Images



Western blot analysis of extracts from HUVEC cells, using Phospho-NF2-S518 antibody (CABP0414). Secondary antibody: HRP Goat Anti-Rabbit IgG (H+L) (CABS014) at 1:10000 dilution. Lysates/proteins: 25ug per lane. Blocking buffer: 3% BSA.



Immunofluorescence analysis of methanol-fixed HeLa cells using Phospho-NF2-S518 antibody (CABP0414).