

# Phospho-NF- $\kappa$ B2-S866 Rabbit Polyclonal Antibody

## CABP0418



### Product Information

**Size:**

50uL, 100uL, 200uL

**Observed MW:**

120kDa

**Calculated MW:**

47kDa/96kDa

**Applications:**

WB IHC IF

**Reactivity:**

Human, Mouse, Rat

### Antibody Information

**Recommended dilutions:**

WB 1:500 - 1:2000 IHC 1:50  
- 1:100 IF 1:50 - 1:100

**Source:**

Rabbit

**Isotype:**

IgG

**Purification:**

Affinity purification

### Protein Background

This gene encodes a subunit of the transcription factor complex nuclear factor-kappa-B (NF $\kappa$ B). The NF $\kappa$ B complex is expressed in numerous cell types and functions as a central activator of genes involved in inflammation and immune function. The protein encoded by this gene can function as both a transcriptional activator or repressor depending on its dimerization partner. The p100 full-length protein is co-translationally processed into a p52 active form. Chromosomal rearrangements and translocations of this locus have been observed in B cell lymphomas, some of which may result in the formation of fusion proteins. There is a pseudogene for this gene on chromosome 18. Alternative splicing results in multiple transcript variants.

### Immunogen information

**Gene ID:**

4791

**Uniprot**

Q00653

**Synonyms:**

CVID10; H2TF1; LYT-10; LYT10; NF- $\kappa$ B2; p100; p49/p100; p52

**Immunogen:**

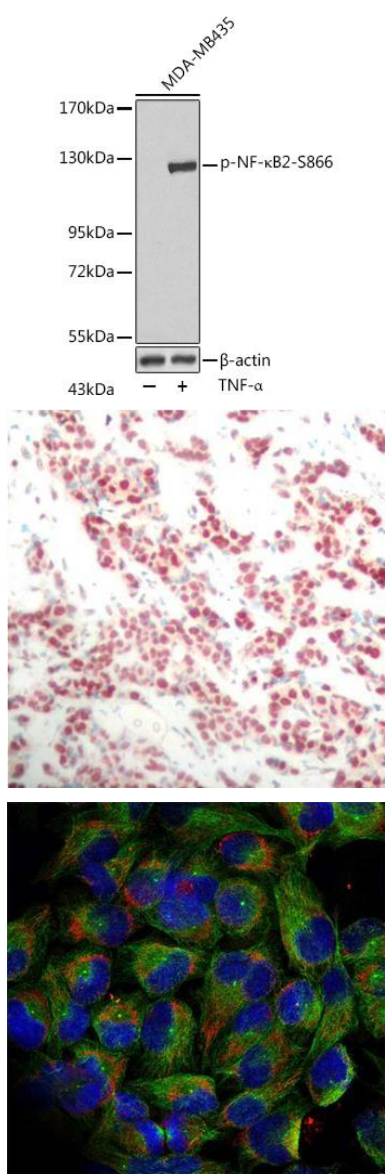
A phospho specific peptide corresponding to residues surrounding S866 of human NF- $\kappa$ B2

**Storage:**

Store at -20°C. Avoid freeze / thaw cycles. Buffer: PBS with 0.02% sodium azide, 50% glycerol, pH7.3.

## Product Images

---



Western blot analysis of extracts of MDA-MB435 cells, using Phospho-NF-κB2-S866 antibody (CABP0418) at dilution. MDA-MB435 cells were treated by TNF-α. Secondary antibody: HRP Goat Anti-Rabbit IgG (H+L) (CABS014) at 1:10000 dilution. Lysates/proteins: 25ug per lane. Blocking buffer: 3% BSA.

Immunohistochemistry of paraffin-embedded human breast carcinoma using Phospho-NF-κB2-S866 antibody (CABP0418).

Immunofluorescence analysis of methanol-fixed HeLa cells using Phospho-NF-κB2-S866 antibody (CABP0418).