

# Phospho-PTPN6-Y536 Rabbit Polyclonal Antibody

## CABP0440



### Product Information

**Size:**

50uL, 100uL, 200uL

**Observed MW:****Calculated MW:**

63kDa/67kDa/70kDa

**Applications:**

WB IHC IF

**Reactivity:**

Human, Mouse, Rat

### Antibody Information

**Recommended dilutions:**

WB 1:500 - 1:2000 IHC 1:50  
- 1:100 IF 1:100 - 1:200

**Source:**

Rabbit

**Isotype:**

IgG

**Purification:**

Affinity purification

### Protein Background

The protein encoded by this gene is a member of the protein tyrosine phosphatase (PTP) family. PTPs are known to be signaling molecules that regulate a variety of cellular processes including cell growth, differentiation, mitotic cycle, and oncogenic transformation. N-terminal part of this PTP contains two tandem Src homolog (SH2) domains, which act as protein phospho-tyrosine binding domains, and mediate the interaction of this PTP with its substrates. This PTP is expressed primarily in hematopoietic cells, and functions as an important regulator of multiple signaling pathways in hematopoietic cells. This PTP has been shown to interact with, and dephosphorylate a wide spectrum of phospho-proteins involved in hematopoietic cell signaling. Multiple alternatively spliced variants of this gene, which encode distinct isoforms, have been reported.

### Immunogen information

**Gene ID:**

5777

**Uniprot**

P29350

**Synonyms:**

HCP; HCPH; HPTP1C; PTP-1C; SH-PTP1; SHP-1; SHP-1L; SHP1;  
CTCN6; PTPN6

**Immunogen:**

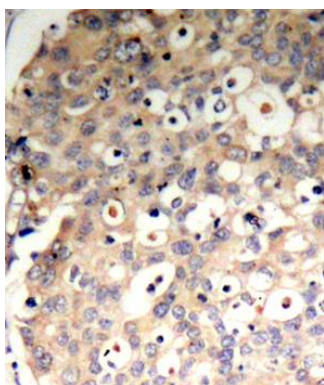
A phospho specific peptide corresponding to residues surrounding Y536 of human PTPN6

**Storage:**

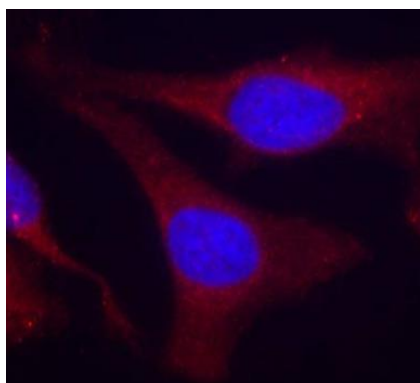
Store at -20°C. Avoid freeze / thaw cycles. Buffer: PBS with 0.02% sodium azide, 50% glycerol, pH7.3.

## Product Images

---



Immunohistochemistry of paraffin-embedded human breast carcinoma tissue, using Phospho-PTPN6-Y536 antibody (CABP0440).



Immunofluorescence analysis of methanol-fixed HeLa cells using Phospho-PTPN6-Y536 antibody (CABP0440).