

# Phospho-NF-kB p65-S311 Rabbit Polyclonal Antibody

## CABP0445



### Product Information

**Size:**

20uL, 50uL, 100uL, 200uL

**Observed MW:**

65kDa

**Calculated MW:**

58kDa/59kDa/60kDa

**Applications:**

WB IHC

**Reactivity:**

Human, Mouse

### Protein Background

NF-kappa-B is a ubiquitous transcription factor involved in several biological processes. It is held in the cytoplasm in an inactive state by specific inhibitors. Upon degradation of the inhibitor, NF-kappa-B moves to the nucleus and activates transcription of specific genes. NF-kappa-B is composed of NFKB1 or NFKB2 bound to either REL, RELA, or RELB. The most abundant form of NF-kappa-B is NFKB1 complexed with the product of this gene, RELA. Four transcript variants encoding different isoforms have been found for this gene.

### Immunogen information

**Gene ID:**

5970

**Uniprot**

Q04206

**Synonyms:**

NFKB3; p65; NF-kB p65; RELA; CMCU

### Antibody Information

**Recommended dilutions:**

WB 1:500 - 1:2000 IHC 1:50 - 1:100

**Source:**

Rabbit

**Isotype:**

IgG

**Purification:**

Affinity purification

**Immunogen:**

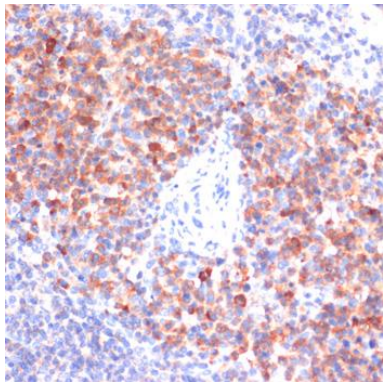
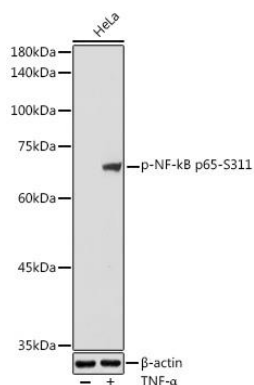
A synthetic phosphorylated peptide around S311 of human NF-kB p65 (NP\_068810.3).

**Storage:**

Store at -20°C. Avoid freeze / thaw cycles. Buffer: PBS with 0.02% sodium azide, 50% glycerol, pH7.3.

## Product Images

---



Western blot analysis of extracts of HeLa cells, using Phospho-NF-kB p65-S311 antibody (CABP0445) at 1:500 dilution. HeLa cells were treated by TNF- $\alpha$  (20 ng/ml) at 37°C for 30 minutes. Secondary antibody: HRP Goat Anti-Rabbit IgG (H+L) (CABS014) at 1:10000 dilution. Lysates/proteins: 25ug per lane. Blocking buffer: 3% nonfat dry milk in TBST. Detection: ECL Basic Kit (CABM00020). Exposure time: 180s.

Immunohistochemistry of paraffin-embedded mouse spleen using Phospho-NF-kB p65-S311 antibody (CABP0445) at dilution of 1:100 (40x lens).