

# Phospho-RELA-S468 Rabbit Polyclonal Antibody



CABP0446

## Product Information

### Size:

20uL, 50uL, 100uL, 200uL

### Observed MW:

60kDa

### Calculated MW:

58kDa/59kDa/60kDa

### Applications:

WB

### Reactivity:

Human, Mouse

## Antibody Information

### Recommended dilutions:

WB 1:500 - 1:2000

### Source:

Rabbit

### Isotype:

IgG

### Purification:

Affinity purification

## Protein Background

NF-kappa-B is a ubiquitous transcription factor involved in several biological processes. It is held in the cytoplasm in an inactive state by specific inhibitors. Upon degradation of the inhibitor, NF-kappa-B moves to the nucleus and activates transcription of specific genes. NF-kappa-B is composed of NFKB1 or NFKB2 bound to either REL, RELA, or RELB. The most abundant form of NF-kappa-B is NFKB1 complexed with the product of this gene, RELA. Four transcript variants encoding different isoforms have been found for this gene.

## Immunogen information

### Gene ID:

5970

### Uniprot

Q04206

### Synonyms:

NFKB3; p65; NF-kB p65; RELA; CMCU

### Immunogen:

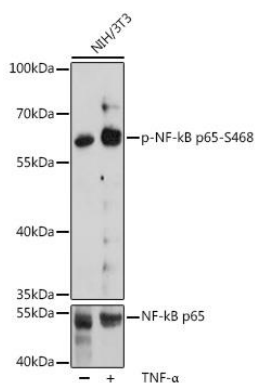
A synthetic phosphorylated peptide around S468 of human RELA (NP\_001138610.1).

### Storage:

Store at -20°C. Avoid freeze / thaw cycles. Buffer: PBS with 0.02% sodium azide, 50% glycerol, pH7.3.

## Product Images

---



Western blot analysis of extracts of NIH/3T3 cells, using Phospho-NF-kB p65-S468 pAb (CABP0446) at 1:2000 dilution or NF-kB p65 antibody (CAB16271). NIH/3T3 cells were treated by TNF- $\alpha$  (20 ng/mL) at 37°C for 30 minutes. Secondary antibody: HRP Goat Anti-Rabbit IgG (H+L) (CABS014) at 1:10000 dilution. Lysates/proteins: 25ug per lane. Blocking buffer: 3% BSA. Detection: ECL Basic Kit (CABM00020). Exposure time: 90s.