

# Phospho-SNCA-Y133 Rabbit Polyclonal Antibody



CABP0451

## Product Information

### Size:

50uL, 100uL, 200uL

### Observed MW:

20kDa

### Calculated MW:

11kDa/13kDa/14kDa

### Applications:

WB IF

### Reactivity:

Human, Mouse, Rat

## Protein Background

Alpha-synuclein is a member of the synuclein family, which also includes beta- and gamma-synuclein. Synucleins are abundantly expressed in the brain and alpha- and beta-synuclein inhibit phospholipase D2 selectively. SNCA may serve to integrate presynaptic signaling and membrane trafficking. Defects in SNCA have been implicated in the pathogenesis of Parkinson disease. SNCA peptides are a major component of amyloid plaques in the brains of patients with Alzheimer's disease. Alternatively spliced transcripts encoding different isoforms have been identified for this gene.

## Immunogen information

### Gene ID:

6622

### Uniprot

P37840

### Synonyms:

PD1; NACP; PARK1; PARK4; SNCA

## Antibody Information

### Recommended dilutions:

WB 1:500 - 1:2000 IF 1:100 - 1:200

### Source:

Rabbit

### Isotype:

IgG

### Purification:

Affinity purification

### Immunogen:

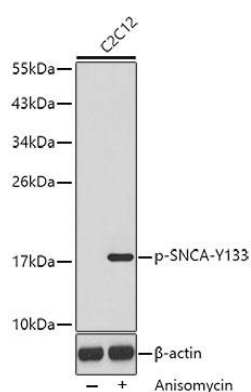
A phospho specific peptide corresponding to residues surrounding Y133 of human SNCA

### Storage:

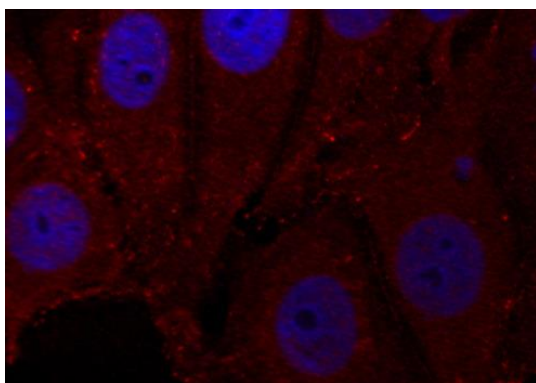
Store at -20°C. Avoid freeze / thaw cycles. Buffer: PBS with 0.02% sodium azide, 50% glycerol, pH7.3.

## Product Images

---



Western blot analysis of extracts from C2C12 cells, using Phospho-SNCA-Y133 antibody (CABP0451). Secondary antibody: HRP Goat Anti-Rabbit IgG (H+L) (CABS014) at 1:10000 dilution. Lysates/proteins: 25ug per lane. Blocking buffer: 3% BSA.



Immunofluorescence analysis of methanol-fixed HeLa cells using Phospho-SNCA-Y133 antibody (CABP0451).