

Phospho-ERK1-T202/Y204 + ERK2-T185/Y187 Rabbit Polyclonal Antibody CABP0472



Product Information

Size:

20uL, 50uL, 100uL, 200uL

Observed MW:

42kDa/44kDa

Calculated MW:

36kDa/41kDa/38kDa/40kDa/
43kDa

Applications:

WB IHC IP

Reactivity:

Human, Mouse, Rat

Antibody Information

Recommended dilutions:

WB 1:500 - 1:2000 IHC 1:50
- 1:100 IP 1:50 - 1:100

Source:

Rabbit

Isotype:

IgG

Purification:

Affinity purification

Protein Background

This gene encodes a member of the MAP kinase family. MAP kinases, also known as extracellular signal-regulated kinases (ERKs), act as an integration point for multiple biochemical signals, and are involved in a wide variety of cellular processes such as proliferation, differentiation, transcription regulation and development. The activation of this kinase requires its phosphorylation by upstream kinases. Upon activation, this kinase translocates to the nucleus of the stimulated cells, where it phosphorylates nuclear targets. One study also suggests that this protein acts as a transcriptional repressor independent of its kinase activity. The encoded protein has been identified as a moonlighting protein based on its ability to perform mechanistically distinct functions. Two alternatively spliced transcript variants encoding the same protein, but differing in the UTRs, have been reported for this gene. [provided by RefSeq, Jan 2014]

Immunogen information

Gene ID:

5594/5595

Uniprot

P28482/P27361

Synonyms:

MAPK1/MAPK3

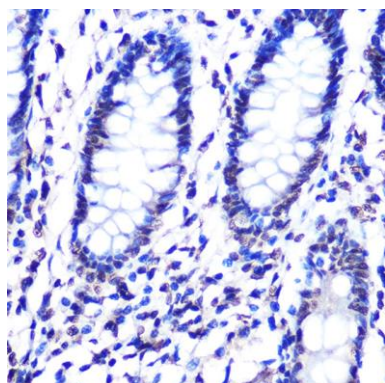
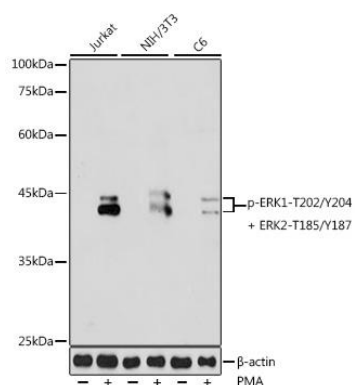
Immunogen:

A synthetic phosphorylated peptide around T185/Y187 of human ERK2 (NP_002736.3).

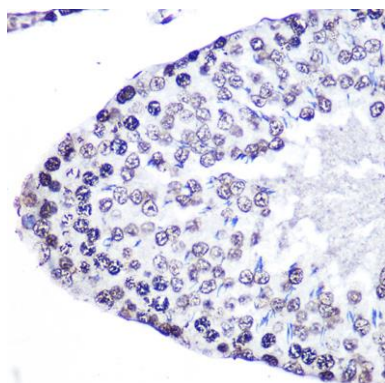
Storage:

Store at -20°C. Avoid freeze / thaw cycles. Buffer: PBS with 0.02% sodium azide, 50% glycerol, pH7.3.

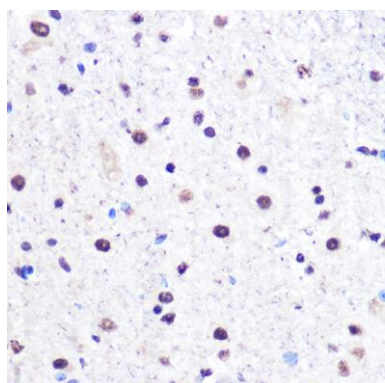
Product Images



Immunohistochemistry of paraffin-embedded human colon using Phospho-ERK1-T202/Y204 + ERK2-T185/Y187 Rabbit pAb (CABP0472) at dilution of 1:100 (40x lens).



Immunohistochemistry of paraffin-embedded rat testis using Phospho-ERK1-T202/Y204 + ERK2-T185/Y187 Rabbit pAb (CABP0472) at dilution of 1:100 (40x lens).



Immunohistochemistry of paraffin-embedded mouse spinal cord using Phospho-ERK1-T202/Y204 + ERK2-T185/Y187 Rabbit pAb (CABP0472) at dilution of 1:100 (40x lens).