

Phospho-SRC Family-Y416 Rabbit Polyclonal Antibody

CABP0480



Product Information

Size:

20uL, 50uL, 100uL, 200uL

Observed MW:

60kDa

Calculated MW:

59kDa/60kDa

Applications:

WB

Reactivity:

Human, Mouse, Rat

Antibody Information

Recommended dilutions:

WB 1:500 - 1:2000

Source:

Rabbit

Isotype:

IgG

Purification:

Affinity purification

Protein Background

This gene is highly similar to the v-src gene of Rous sarcoma virus. This proto-oncogene may play a role in the regulation of embryonic development and cell growth. The protein encoded by this gene is a tyrosine-protein kinase whose activity can be inhibited by phosphorylation by c-SRC kinase. Mutations in this gene could be involved in the malignant progression of colon cancer. Two transcript variants encoding the same protein have been found for this gene.

Immunogen information

Gene ID:

2534/3055/3932/4067/6714/7525

Uniprot

P06241/P08631/P06239/P07948/P12931/P07947

Synonyms:

ASV; SRC1; THC6; c-SRC; p60-Src; SRC

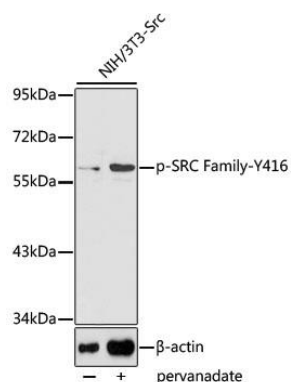
Immunogen:

A phospho specific peptide corresponding to residues surrounding Y416 of human SRC Family

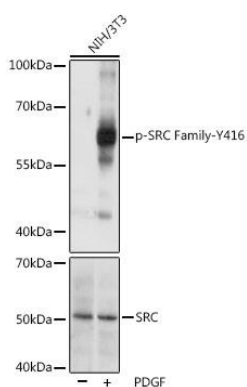
Storage:

Store at -20°C. Avoid freeze / thaw cycles. Buffer: PBS with 0.02% sodium azide, 50% glycerol, pH7.3.

Product Images



Western blot analysis of extracts of NIH/3T3-Src cells, using Phospho-SRC Family-Y416 antibody (CABP0480). Secondary antibody: HRP Goat Anti-Rabbit IgG (H+L) (CABS014) at 1:10000 dilution. Lysates/proteins: 25ug per lane. Blocking buffer: 3% BSA.



Western blot analysis of extracts of NIH/3T3 cells, using Phospho-SRC Family-Y416 pAb (CABP0480) at 1:1000 dilution or SRC antibody (A18240). NIH/3T3 cells were treated by PDGF (100 ng/mL) at 37°C for 30 minutes after serum-starvation overnight. Secondary antibody: HRP Goat Anti-Rabbit IgG (H+L) (CABS014) at 1:10000 dilution. Lysates/proteins: 25ug per lane. Blocking buffer: 3% BSA. Detection: ECL Basic Kit (CABM00020). Exposure time: 60s.