

Phospho-YAP1-S127 Rabbit Polyclonal Antibody



CABP0489

Product Information

Size:

20uL, 50uL, 100uL, 200uL

Observed MW:

68kDa

Calculated MW:

36kDa/48kDa/49kDa/50kDa/
52kDa/53kDa/54kDa

Applications:

WB IHC IF

Reactivity:

Human, Mouse, Rat

Antibody Information

Recommended dilutions:

WB 1:500 - 1:1000 IHC 1:50
- 1:200 IF 1:50 - 1:100

Source:

Rabbit

Isotype:

IgG

Purification:

Affinity purification

Protein Background

This gene encodes a downstream nuclear effector of the Hippo signaling pathway which is involved in development, growth, repair, and homeostasis. This gene is known to play a role in the development and progression of multiple cancers as a transcriptional regulator of this signaling pathway and may function as a potential target for cancer treatment. Alternative splicing results in multiple transcript variants encoding different isoforms.

Immunogen information

Gene ID:

10413

Uniprot

P46937

Synonyms:

COB1; YAP; YAP2; YAP65; YKI; YAP1

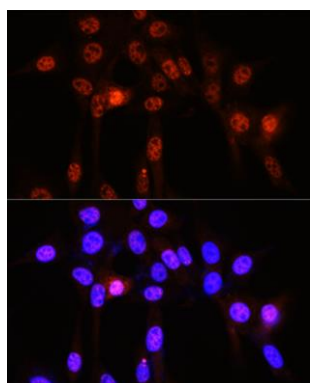
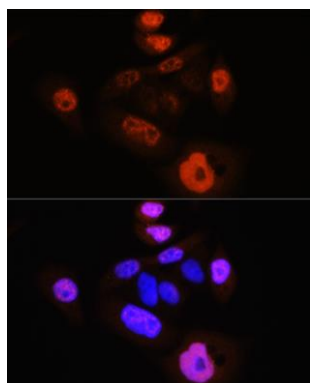
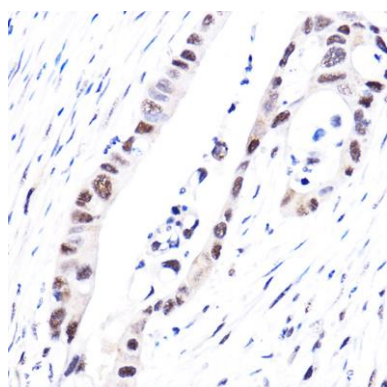
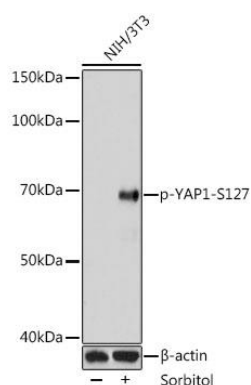
Immunogen:

A synthetic phosphorylated peptide around S127 of human YAP1 (NP_001123617.1).

Storage:

Store at -20°C. Avoid freeze / thaw cycles. Buffer: PBS with 0.02% sodium azide, 50% glycerol, pH7.3.

Product Images



Western blot analysis of extracts of NIH3T3 cells, using Phospho-YAP1-S127 antibody (CABP0489) at 1:1000 dilution. NIH3T3 cells were treated by Sorbitol (0.2M) at 37°C for 60 minutes after serum-starvation overnight. Secondary antibody: HRP Goat Anti-Rabbit IgG (H+L) (CABS014) at 1:10000 dilution. Lysates/proteins: 25ug per lane. Blocking buffer: 3% BSA. Detection: ECL Enhanced Kit (CABM00021). Exposure time: 60s.

Immunohistochemistry of paraffin-embedded human colon carcinoma using Phospho-YAP1-S127 Rabbit pAb (CABP0489) at dilution of 1:100 (40x lens).

Immunofluorescence analysis of HeLa cells using Phospho-YAP1-S127 Rabbit pAb (CABP0489) at dilution of 1:100 (40x lens). Blue: DAPI for nuclear staining.

Immunofluorescence analysis of NIH-3T3 cells using Phospho-YAP1-S127 Rabbit pAb (CABP0489) at dilution of 1:100 (40x lens). Blue: DAPI for nuclear staining.