

# Phospho-PKCdelta-Y311 Rabbit Polyclonal Antibody

## CABP0496



### Product Information

**Size:**

20uL, 50uL, 100uL, 200uL

**Observed MW:**

78kDa

**Calculated MW:**

77kDa/80kDa

**Applications:**

WB

**Reactivity:**

Human, Mouse

### Antibody Information

**Recommended dilutions:**

WB 1:500 - 1:2000

**Source:**

Rabbit

**Isotype:**

IgG

**Purification:**

Affinity purification

### Protein Background

Protein kinase C (PKC) is a family of serine- and threonine-specific protein kinases that can be activated by calcium and the second messenger diacylglycerol. PKC family members phosphorylate a wide variety of protein targets and are known to be involved in diverse cellular signaling pathways. PKC family members also serve as major receptors for phorbol esters, a class of tumor promoters. Each member of the PKC family has a specific expression profile and is believed to play distinct roles in cells. The protein encoded by this gene is one of the PKC family members. Studies both in human and mice demonstrate that this kinase is involved in B cell signaling and in the regulation of growth, apoptosis, and differentiation of a variety of cell types. Alternatively spliced transcript variants encoding the same protein have been observed.

### Immunogen information

**Gene ID:**

5580

**Uniprot**

Q05655

**Synonyms:**

PRKCD; ALPS3; CVID9; MAY1; PKCD; nPKC-delta; PKCDelta

**Immunogen:**

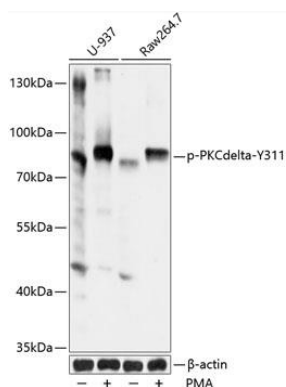
A phospho specific peptide corresponding to residues surrounding Y311 of human PKCdelta

**Storage:**

Store at -20°C. Avoid freeze / thaw cycles. Buffer: PBS with 0.02% sodium azide, 50% glycerol, pH7.3.

## Product Images

---



Western blot analysis of extracts of U937 and Raw264.7 cells, using Phospho-PKCdelta-Y311 antibody (CABP0496) at 1:1000 dilution. U-937 cells were treated by PMA/TPA (200nM) for 30 minutes. RAW 264.7 cells were treated by PMA (200 nM) for 30 minutes. Secondary antibody: HRP Goat Anti-Rabbit IgG (H+L) (CABS014) at 1:10000 dilution. Lysates/proteins: 25ug per lane. Blocking buffer: 3% BSA. Detection: ECL Basic Kit (CABM00020). Exposure time: 60s.