

Phospho-p70 S6 kinase-T421/S424 Rabbit Monoclonal Antibody

CABP0502



Product Information

Size:

20uL, 50uL, 100uL

Observed MW:

70kDa

Calculated MW:

70kDa

Applications:

WB IHC IF

Reactivity:

Human, Mouse, Rat

Antibody Information

Recommended dilutions:

WB 1:500 - 1:2000 IHC 1:50
- 1:200 IF 1:50 - 1:200

Source:

Rabbit

Isotype:

IgG

Purification:

Affinity purification

Protein Background

This gene encodes a member of the ribosomal S6 kinase family of serine/threonine kinases. The encoded protein responds to mTOR (mammalian target of rapamycin) signaling to promote protein synthesis, cell growth, and cell proliferation. Activity of this gene has been associated with human cancer. Alternatively spliced transcript variants have been observed. The use of alternative translation start sites results in isoforms with longer or shorter N-termini which may differ in their subcellular localizations. There are two pseudogenes for this gene on chromosome 17. [provided by RefSeq, Jan 2013]

Immunogen information

Gene ID:

6198

Uniprot

P23443

Synonyms:

PS6K; S6K; S6K-beta-1; S6K1; STK14A; p70 S6KA; p70(S6K)-alpha;
p70-S6K; p70-alpha; P70 S6K; RPS6KB1; p70S6KA

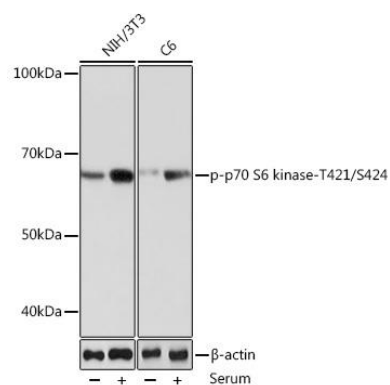
Immunogen:

A synthesized peptide derived from human Phospho-S6K1 (T421 + S424).

Storage:

Store at -20°C. Avoid freeze / thaw cycles. Buffer: PBS with 0.02% sodium azide, 0.05% BSA, 50% glycerol, pH7.3.

Product Images



Western blot - Phospho-p70 S6 kinase-T421/S424 Rabbit mAb (CABP0502)