

Phospho-IKKA α -S176 Rabbit Polyclonal Antibody

CABP0505



Product Information

Size:

20uL, 50uL, 100uL, 200uL

Observed MW:

84kDa

Calculated MW:

84kDa

Applications:

WB

Reactivity:

Human, Mouse, Rat

Protein Background

This gene encodes a member of the serine/threonine protein kinase family. The encoded protein, a component of a cytokine-activated protein complex that is an inhibitor of the essential transcription factor NF-kappa-B complex, phosphorylates sites that trigger the degradation of the inhibitor via the ubiquitination pathway, thereby activating the transcription factor.

Immunogen information

Gene ID:

1147

Uniprot

O15111

Synonyms:

CHUK; IKBKA; IKK-alpha; IKK1; IKKA; NFKBIKA; TCF16; IKK alpha

Antibody Information

Recommended dilutions:

WB 1:500 - 1:2000

Source:

Rabbit

Isotype:

IgG

Purification:

Affinity purification

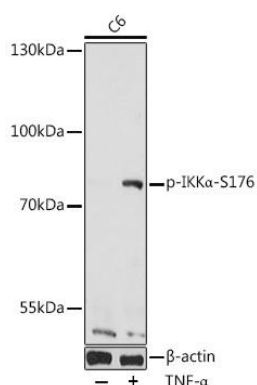
Immunogen:

A synthetic phosphorylated peptide around S176 of human IKKA α (NP_001269.3).

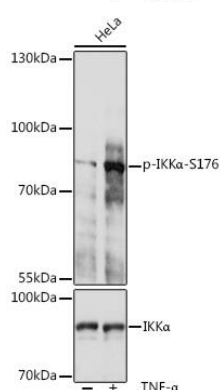
Storage:

Store at -20°C. Avoid freeze / thaw cycles. Buffer: PBS with 0.02% sodium azide, 50% glycerol, pH7.3.

Product Images



Western blot analysis of extracts of C6 cells, using Phospho-IKKalpha-S176 antibody (CABP0505) at 1:1000 dilution. C6 cells were treated by TNF-a (20 ng/mL) at 37°C for 30 minutes. Secondary antibody: HRP Goat Anti-Rabbit IgG (H+L) (CABS014) at 1:10000 dilution. Lysates/proteins: 25ug per lane. Blocking buffer: 3% BSA. Detection: ECL Basic Kit (CABM00020). Exposure time: 30s.



Western blot analysis of extracts of HeLa cells, using Phospho-IKKα-S176 pAb (CABP0505) at 1:1000 dilution or IKK alpha antibody (CAB0423). HeLa cells were treated by TNF-a (20 ng/mL) at 37°C for 30 minutes. Secondary antibody: HRP Goat Anti-Rabbit IgG (H+L) (CABS014) at 1:10000 dilution. Lysates/proteins: 25ug per lane. Blocking buffer: 3% BSA. Detection: ECL Basic Kit (CABM00020). Exposure time: 30s.