

Phospho-IKKA α -S180 Rabbit Polyclonal Antibody

CABP0506



Product Information

Size:

20uL, 50uL, 100uL, 200uL

Observed MW:

100kDa

Calculated MW:

84kDa

Applications:

WB

Reactivity:

Human, Mouse

Protein Background

This gene encodes a member of the serine/threonine protein kinase family. The encoded protein, a component of a cytokine-activated protein complex that is an inhibitor of the essential transcription factor NF-kappa-B complex, phosphorylates sites that trigger the degradation of the inhibitor via the ubiquination pathway, thereby activating the transcription factor.

Immunogen information

Gene ID:

1147

Uniprot

O15111

Synonyms:

CHUK; IKBKA; IKK-alpha; IKK1; IKKA; NFKBKA; TCF16; IKK alpha

Antibody Information

Recommended dilutions:

WB 1:500 - 1:2000

Source:

Rabbit

Isotype:

IgG

Purification:

Affinity purification

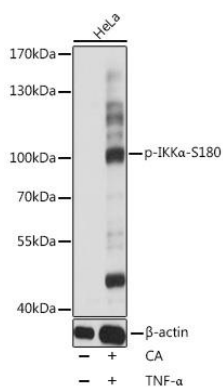
Immunogen:

A synthetic phosphorylated peptide around S180 of human IKKA α (NP_001269.3).

Storage:

Store at -20°C. Avoid freeze / thaw cycles. Buffer: PBS with 0.02% sodium azide, 50% glycerol, pH7.3.

Product Images



Western blot analysis of extracts of HeLa cells, using Phospho-IKK α -S180 antibody (CABP0506) at 1:1000 dilution. HeLa cells were treated by both TNF- α (20ng/mL) and Calyculin A (100nM) for 10 minutes. Secondary antibody: HRP Goat Anti-Rabbit IgG (H+L) (CABS014) at 1:10000 dilution. Lysates/proteins: 25ug per lane. Blocking buffer: 3% BSA. Detection: ECL Basic Kit (CABM00020). Exposure time: 5s.