

Phospho-SRC Family-Y416 Rabbit Polyclonal Antibody

CABP0511



Product Information

Size:

20uL, 50uL, 100uL, 200uL

Observed MW:

61kDa

Calculated MW:

54kDa/60kDa/40kDa/58kDa/
61kDa

Applications:

WB

Reactivity:

Human, Mouse, Rat

Protein Background

This gene is a member of the protein-tyrosine kinase oncogene family. It encodes a membrane-associated tyrosine kinase that has been implicated in the control of cell growth. The protein associates with the p85 subunit of phosphatidylinositol 3-kinase and interacts with the fyn-binding protein. Alternatively spliced transcript variants encoding distinct isoforms exist. [provided by RefSeq, Jul 2008]

Immunogen information

Gene ID:

2534/3932

Uniprot

P06241/P06239

Synonyms:

ASV; SRC1; THC6; c-SRC; p60-Src; SRC

Antibody Information

Recommended dilutions:

WB 1:500 - 1:2000

Source:

Rabbit

Isotype:

IgG

Purification:

Affinity purification

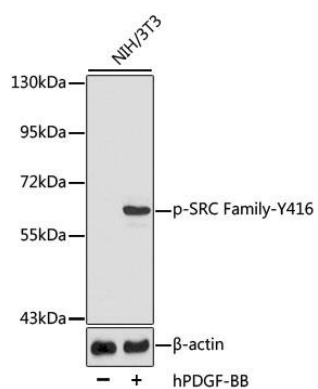
Immunogen:

A phospho specific peptide corresponding to residues surrounding Y416 of human SRC Family

Storage:

Store at -20°C. Avoid freeze / thaw cycles. Buffer: PBS with 0.02% sodium azide, 50% glycerol, pH7.3.

Product Images



Western blot analysis of extracts of NIH3T3 cells, using Phospho-SRC Family-Y416 antibody (CABP0511). Secondary antibody: HRP Goat Anti-Rabbit IgG (H+L) (CABS014) at 1:10000 dilution. Lysates/proteins: 25ug per lane. Blocking buffer: 3% BSA.