

# Phospho-ATF2-T69/T71 Rabbit Polyclonal Antibody

CABP0525



## Product Information

### Size:

20uL, 50uL, 100uL, 200uL

### Observed MW:

68kDa

### Calculated MW:

13- 15kDa/23-24kDa/35-54kDa

### Applications:

WB IHC

### Reactivity:

Human, Mouse, Rat

## Antibody Information

### Recommended dilutions:

WB 1:500 - 1:2000 IHC 1:50 - 1:200

### Source:

Rabbit

### Isotype:

IgG

### Purification:

Affinity purification

## Protein Background

This gene encodes a transcription factor that is a member of the leucine zipper family of DNA binding proteins. The encoded protein has been identified as a moonlighting protein based on its ability to perform mechanistically distinct functions. This protein binds to the cAMP-responsive element (CRE), an octameric palindrome. It forms a homodimer or a heterodimer with c-Jun and stimulates CRE-dependent transcription. This protein is also a histone acetyltransferase (HAT) that specifically acetylates histones H2B and H4 in vitro; thus it may represent a class of sequence-specific factors that activate transcription by direct effects on chromatin components. The encoded protein may also be involved in cell's DNA damage response independent of its role in transcriptional regulation. Several alternatively spliced transcript variants have been found for this gene.

## Immunogen information

### Gene ID:

1386

### Uniprot

P15336

### Synonyms:

CRE-BP1; CREB-2; CREB2; HB16; TREB7; ATF2

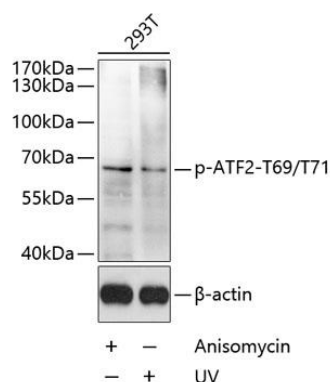
### Immunogen:

A synthetic phosphorylated peptide around T69 & T71 of human ATF2 (NP\_001871.2).

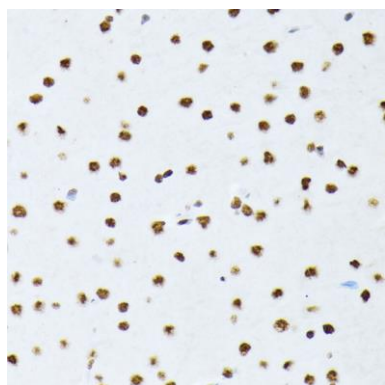
### Storage:

Store at -20°C. Avoid freeze / thaw cycles. Buffer: PBS with 0.02% sodium azide, 50% glycerol, pH7.3.

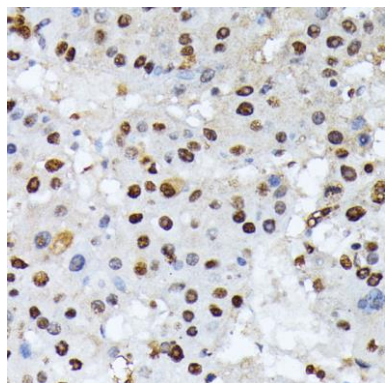
## Product Images



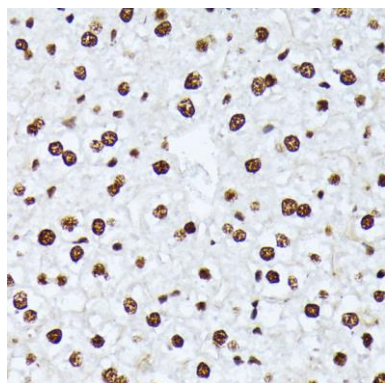
Western blot analysis of extracts of 293T cells, using Phospho-ATF2-T69/T71 antibody (CABP0525) at 1:1000 dilution. Secondary antibody: HRP Goat Anti-Rabbit IgG (H+L) (CABS014) at 1:10000 dilution. Lysates/proteins: 25ug per lane. Blocking buffer: 3% BSA. Detection: ECL Basic Kit (CABM00020).



Immunohistochemistry of paraffin-embedded rat brain using Phospho-ATF2-T69/71 antibody (CABP0525) at dilution of 1:100 (40x lens).



Immunohistochemistry of paraffin-embedded human liver cancer using Phospho-ATF2-T69/71 antibody (CABP0525) at dilution of 1:100 (40x lens).



Immunohistochemistry of paraffin-embedded mouse liver using Phospho-ATF2-T69/71 antibody (CABP0525) at dilution of 1:100 (40x lens).