

# Phospho-HER2/ERBB2-Y1221/1222 Rabbit Polyclonal Antibody

## CABP0527



### Product Information

**Size:**

20uL, 50uL, 100uL, 200uL

**Observed MW:**

190kDa

**Calculated MW:**

62kDa/70kDa/97kDa/134kDa  
/136kDa/137kDa

**Applications:**

WB

**Reactivity:**

Human

### Antibody Information

**Recommended dilutions:**

WB 1:500 - 1:1000

**Source:**

Rabbit

**Isotype:**

IgG

**Purification:**

Affinity purification

### Protein Background

This gene encodes a member of the epidermal growth factor (EGF) receptor family of receptor tyrosine kinases. This protein has no ligand binding domain of its own and therefore cannot bind growth factors. However, it does bind tightly to other ligand-bound EGF receptor family members to form a heterodimer, stabilizing ligand binding and enhancing kinase-mediated activation of downstream signalling pathways, such as those involving mitogen-activated protein kinase and phosphatidylinositol-3 kinase. Allelic variations at amino acid positions 654 and 655 of isoform a (positions 624 and 625 of isoform b) have been reported, with the most common allele, Ile654/Ile655, shown here. Amplification and/or overexpression of this gene has been reported in numerous cancers, including breast and ovarian tumors. Alternative splicing results in several additional transcript variants, some encoding different isoforms and others that have not been fully characterized.

### Immunogen information

**Gene ID:**

2064

**Uniprot**

P04626

**Synonyms:**

ERBB2; CD340; HER-2; HER-2/neu; HER2; MLN 19; NEU; NGL; TKR1;  
erb-b2 receptor tyrosine kinase 2; HER2/ErbB2; ErbB2; MLN19

**Immunogen:**

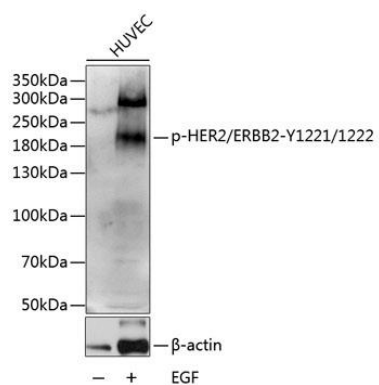
A synthetic phosphorylated peptide around Y1221 & Y1222 of human HER2/ERBB2 (NP\_004439.2).

**Storage:**

Store at -20°C. Avoid freeze / thaw cycles. Buffer: PBS with 0.02% sodium azide, 50% glycerol, pH7.3.

## Product Images

---



Western blot analysis of extracts of HUVEC cell line, using Phospho-HER2/ERBB2-Y1221/1222 antibody (CABP0527) 1:1000 dilution.. Secondary antibody: HRP Goat Anti-Rabbit IgG (H+L) (CABS014) at 1:10000 dilution. Lysates/proteins: 25ug per lane. Blocking buffer: 3% BSA.