

Phospho-Jak2-Y1007/1008 Rabbit Polyclonal Antibody

CABP0531



Product Information

Size:

20uL, 50uL, 100uL, 200uL

Observed MW:

125kDa

Calculated MW:

130kDa

Applications:

WB IHC

Reactivity:

Human, Mouse, Rat

Protein Background

This gene product is a protein tyrosine kinase involved in a specific subset of cytokine receptor signaling pathways. It has been found to be constitutively associated with the prolactin receptor and is required for responses to gamma interferon. Mice that do not express an active protein for this gene exhibit embryonic lethality associated with the absence of definitive erythropoiesis.

Immunogen information

Gene ID:

3717

Uniprot

O60674

Synonyms:

JAK2; JTK10; THCYT3

Antibody Information

Recommended dilutions:

WB 1:500 - 1:1000 IHC 1:50
- 1:200

Source:

Rabbit

Isotype:

IgG

Purification:

Affinity purification

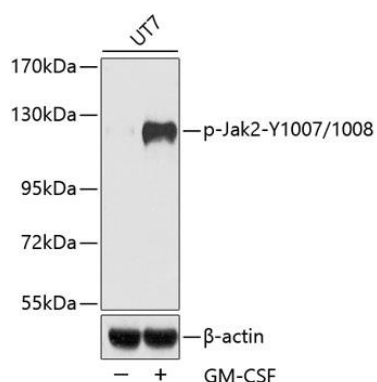
Immunogen:

A synthetic phosphorylated peptide around Y1007 & Y1008 of human Jak2 (NP_004963.1).

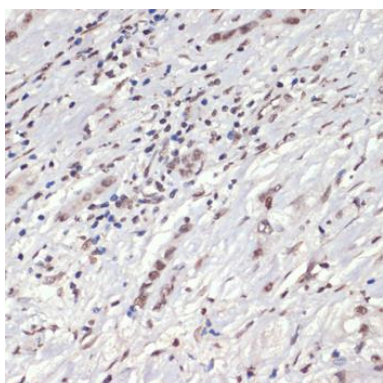
Storage:

Store at -20°C. Avoid freeze / thaw cycles. Buffer: PBS with 0.02% sodium azide, 50% glycerol, pH7.3.

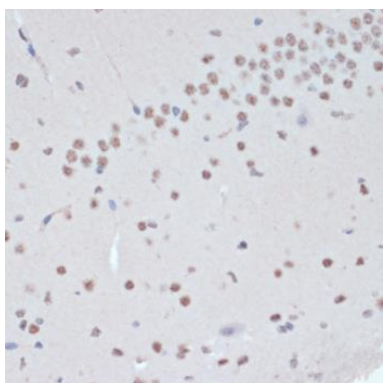
Product Images



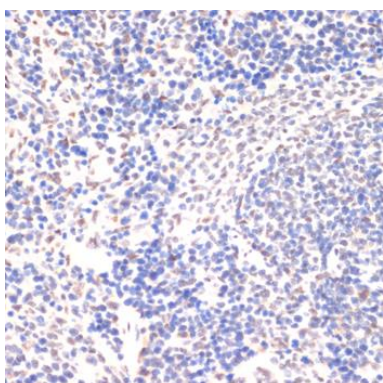
Western blot analysis of extracts of UT7 cells, using Phospho-Jak2-Y1007/1008 antibody (CABP0531). Secondary antibody: HRP Goat Anti-Rabbit IgG (H+L) (CABS014) at 1:10000 dilution. Lysates/proteins: 25ug per lane. Blocking buffer: 3% BSA.



Immunohistochemistry of paraffin-embedded human liver cancer using Phospho-Jak2-Y1007/1008 antibody (CABP0531) at dilution of 1:200 (40x lens).



Immunohistochemistry of paraffin-embedded mouse brain using Phospho-Jak2-Y1007/1008 antibody (CABP0531) at dilution of 1:200 (40x lens).



Immunohistochemistry of paraffin-embedded rat spleen using Phospho-Jak2-Y1007/1008 antibody (CABP0531) at dilution of 1:200 (40x lens).