

# Phospho-P90RSK-T359/S363 Rabbit Polyclonal Antibody

## CABP0539



### Product Information

**Size:**

20uL, 50uL, 100uL, 200uL

**Observed MW:**

83kDa

**Calculated MW:**

72kDa/81kDa/82kDa/83kDa

**Applications:**

WB

**Reactivity:**

Human

### Protein Background

This gene encodes a member of the RSK (ribosomal S6 kinase) family of serine/threonine kinases. This kinase contains 2 nonidentical kinase catalytic domains and phosphorylates various substrates, including members of the mitogen-activated kinase (MAPK) signalling pathway. The activity of this protein has been implicated in controlling cell growth and differentiation. Alternate transcriptional splice variants, encoding different isoforms, have been characterized.

### Immunogen information

**Gene ID:**

6195

**Uniprot**

Q15418

**Synonyms:**

HU-1; MAPKAPK1A; RSK; RSK1; p90Rsk; RPS6KA1

### Antibody Information

**Recommended dilutions:**

WB 1:500 - 1:2000

**Source:**

Rabbit

**Isotype:**

IgG

**Purification:**

Affinity purification

**Immunogen:**

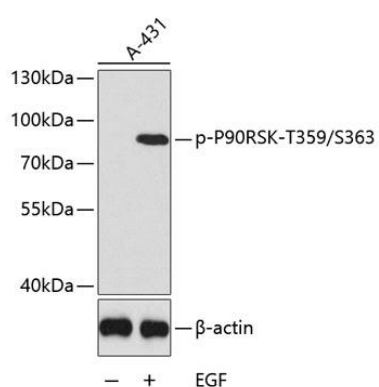
A synthetic phosphorylated peptide around T359 & S363 of human P90RSK (NP\_002944.2).

**Storage:**

Store at -20°C. Avoid freeze / thaw cycles. Buffer: PBS with 0.02% sodium azide, 50% glycerol, pH7.3.

## Product Images

---



Western blot analysis of extracts of A431 cells, using Phospho-P90RSK-T359/S363 antibody (CABP0539). Secondary antibody: HRP Goat Anti-Rabbit IgG (H+L) (CABS014) at 1:10000 dilution. Lysates/proteins: 25ug per lane. Blocking buffer: 3% BSA.