

Phospho-MKNK1-T197/202 Rabbit Polyclonal Antibody

CABP0544



Product Information

Size:

20uL, 50uL, 100uL, 200uL

Observed MW:

51kDa

Calculated MW:

39kDa/47kDa/51kDa

Applications:

WB

Reactivity:

Human, Mouse, Rat

Protein Background

This gene encodes a Ser/Thr protein kinase that interacts with, and is activated by ERK1 and p38 mitogen-activated protein kinases, and thus may play a role in the response to environmental stress and cytokines. This kinase may also regulate transcription by phosphorylating eIF4E via interaction with the C-terminal region of eIF4G. Alternatively spliced transcript variants have been noted for this gene.

Immunogen information

Gene ID:

8569

Uniprot

Q9BUB5

Synonyms:

MNK1; MKNK1

Antibody Information

Recommended dilutions:

WB 1:500 - 1:2000

Source:

Rabbit

Isotype:

IgG

Purification:

Affinity purification

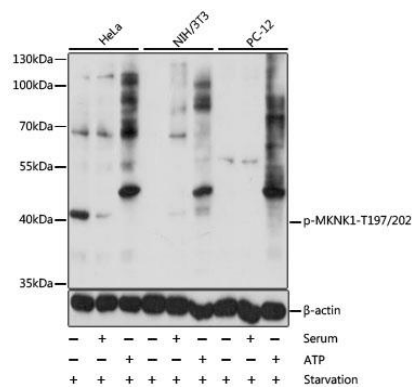
Immunogen:

A phospho specific peptide corresponding to residues surrounding T197/202 of human MKNK1

Storage:

Store at -20°C. Avoid freeze / thaw cycles. Buffer: PBS with 0.02% sodium azide, 50% glycerol, pH7.3.

Product Images



Western blot analysis of extracts of various cell lines, using Phospho-MKNK1-T197/202 antibody (CABP0544) at 1:1000 dilution. HeLa cells were treated by 10% FBS for after serum-starvation overnight or treated by ATP (5mM) at 30°C for 1 hour. NIH/3T3 cells were treated by 10% FBS for 30 minutes after serum-starvation overnight or treated by ATP (5mM) at 30°C for 1 hour. PC-12 cells were treated by 20% FBS for 20 minutes after serum-starvation overnight or treated by ATP (5mM) at 30°C for 1 hour. Secondary antibody: HRP Goat Anti-Rabbit IgG (H+L) (CABS014) at 1:10000 dilution. Lysates/proteins: 25ug per lane. Blocking buffer: 3% BSA. Detection: ECL Basic Kit (CABM00020). Exposure time: 1s.