

Phospho-Smad2-S465/467 + Smad3-S423/425 Rabbit Polyclonal Antibody CABP0548



Product Information

Size:

20uL, 50uL, 100uL, 200uL

Observed MW:

52kDa/60kDa

Calculated MW:

48kDa/52kDa/25kDa/35kDa/
43kDa

Applications:

WB IHC IF

Reactivity:

Human, Mouse, Rat

Antibody Information

Recommended dilutions:

WB 1:500 - 1:2000 IHC 1:50
- 1:200 IF 1:50 - 1:200

Source:

Rabbit

Isotype:

IgG

Purification:

Affinity purification

Protein Background

The protein encoded by this gene belongs to the SMAD, a family of proteins similar to the gene products of the Drosophila gene 'mothers against decapentaplegic' (Mad) and the C. elegans gene Sma. SMAD proteins are signal transducers and transcriptional modulators that mediate multiple signaling pathways. This protein mediates the signal of the transforming growth factor (TGF)-beta, and thus regulates multiple cellular processes, such as cell proliferation, apoptosis, and differentiation. This protein is recruited to the TGF-beta receptors through its interaction with the SMAD anchor for receptor activation (SARA) protein. In response to TGF-beta signal, this protein is phosphorylated by the TGF-beta receptors. The phosphorylation induces the dissociation of this protein with SARA and the association with the family member SMAD4. The association with SMAD4 is important for the translocation of this protein into the nucleus, where it binds to target promoters and forms a transcription repressor complex with other cofactors. This protein can also be phosphorylated by activin type 1 receptor kinase, and mediates the signal from the activin. Alternatively spliced transcript variants have been observed for this gene. [provided by RefSeq, May 2012]

Immunogen information

Gene ID:

4087/4088

Uniprot

Q15796/P84022

Synonyms:

HSPC193; HsT17436; JV15-2; LDS1C; LDS3; MADH3

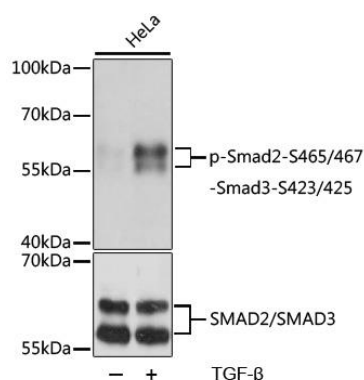
Immunogen:

A synthetic phosphorylated peptide around S465 & S467 of human Smad2 (NP_005892.1).

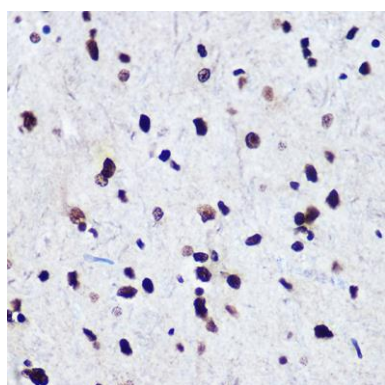
Storage:

Store at -20°C. Avoid freeze / thaw cycles. Buffer: PBS with 0.02% sodium azide, 50% glycerol, pH7.3.

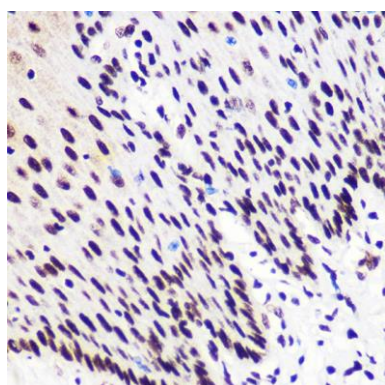
Product Images



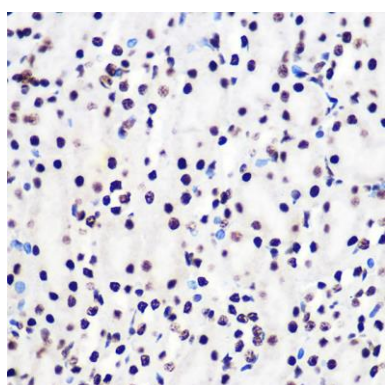
Western blot analysis of extracts of HeLa cells, using Phospho-Smad2-S465/467/-Smad3-S423/425 pAb (CABP0548) at 1:1000 dilution or Smad2/Smad3 (CAB7536). HeLa cells were treated by TGF- β (10ng/mL) for 30 minutes after serum-starvation overnight. Secondary antibody: HRP Goat Anti-Rabbit IgG (H+L) (CABS014) at 1:10000 dilution. Lysates/proteins: 25ug per lane. Blocking buffer: 3% BSA. Detection: ECL Basic Kit (CABM00020). Exposure time: 1s.



Immunohistochemistry of paraffin-embedded Rat brain using Phospho-Smad2-S465/467 + Smad3-S423/425 antibody (CABP0548) at dilution of 1:100 (40x lens).



Immunohistochemistry of paraffin-embedded Human esophagus using Phospho-Smad2-S465/467 + Smad3-S423/425 antibody (CABP0548) at dilution of 1:100 (40x lens).



Immunohistochemistry of paraffin-embedded Mouse kidney using Phospho-Smad2-S465/467 + Smad3-S423/425 antibody (CABP0548) at dilution of 1:100 (40x lens).