

Phospho-IRS1-S307 Rabbit Polyclonal Antibody



CABP0552

Product Information

Size:

20uL, 50uL, 100uL, 200uL

Observed MW:

200kDa

Calculated MW:

131kDa

Applications:

WB

Reactivity:

Human, Mouse, Rat

Protein Background

This gene encodes a protein which is phosphorylated by insulin receptor tyrosine kinase. Mutations in this gene are associated with type II diabetes and susceptibility to insulin resistance.

Immunogen information

Gene ID:

3667

Uniprot

P35568

Synonyms:

HIRS-1; IRS1

Antibody Information

Recommended dilutions:

WB 1:500 - 1:2000

Source:

Rabbit

Isotype:

IgG

Purification:

Affinity purification

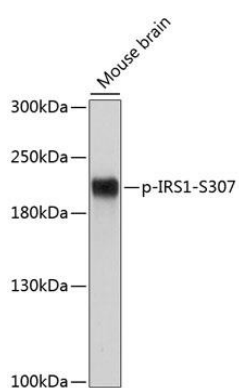
Immunogen:

A synthetic phosphorylated peptide around S307 of human IRS1 (NP_005535.1).

Storage:

Store at -20°C. Avoid freeze / thaw cycles. Buffer: PBS with 0.02% sodium azide, 50% glycerol, pH7.3.

Product Images



Western blot analysis of extracts of mouse brain, using Phospho-IRS1-S307 antibody (CABP0552) at 1:500 dilution. Secondary antibody: HRP Goat Anti-Rabbit IgG (H+L) (CABS014) at 1:10000 dilution. Lysates/proteins: 25ug per lane. Blocking buffer: 3% BSA. Detection: ECL Basic Kit (CABM00020). Exposure time: 1s.