

Phospho-p70 S6 kinase-T389 Rabbit Polyclonal Antibody

CABP0564



Product Information

Size:

20uL, 50uL, 100uL, 200uL

Observed MW:

90kDa/100kDa

Calculated MW:

51kDa/52kDa/56kDa/59kDa

Applications:

WB IHC IF

Reactivity:

Human, Mouse, Rat

Antibody Information

Recommended dilutions:

WB 1:500 - 1:2000 IHC 1:50
- 1:200 IF 1:50 - 1:200

Source:

Rabbit

Isotype:

IgG

Purification:

Affinity purification

Protein Background

This gene encodes a member of the ribosomal S6 kinase family of serine/threonine kinases. The encoded protein responds to mTOR (mammalian target of rapamycin) signaling to promote protein synthesis, cell growth, and cell proliferation. Activity of this gene has been associated with human cancer. Alternatively spliced transcript variants have been observed. The use of alternative translation start sites results in isoforms with longer or shorter N-termini which may differ in their subcellular localizations. There are two pseudogenes for this gene on chromosome 17.

Immunogen information

Gene ID:

6198

Uniprot

P23443

Synonyms:

PS6K; S6K; S6K-beta-1; S6K1; STK14A; p70 S6KA; p70(S6K)-alpha;
p70-S6K; p70-alpha; P70 S6K; RPS6KB1; p70S6KA

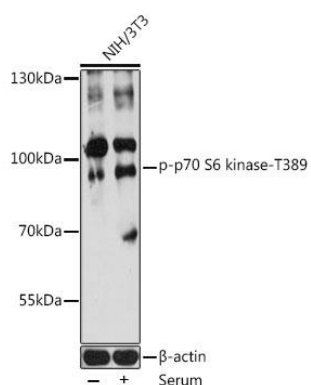
Immunogen:

A phospho specific peptide corresponding to residues surrounding T389 of human P70 S6K

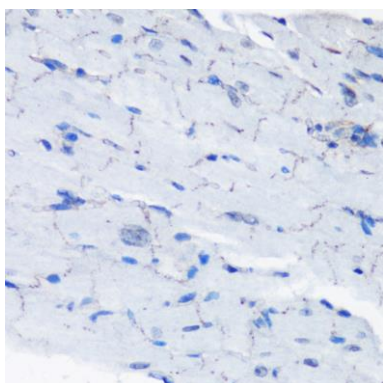
Storage:

Store at -20°C. Avoid freeze / thaw cycles. Buffer: PBS with 0.02% sodium azide, 50% glycerol, pH7.3.

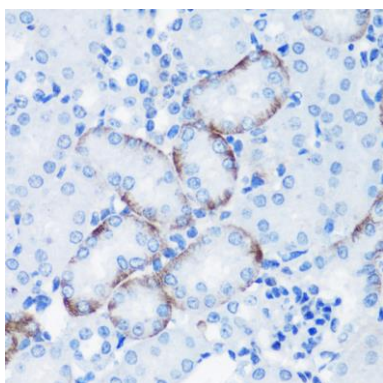
Product Images



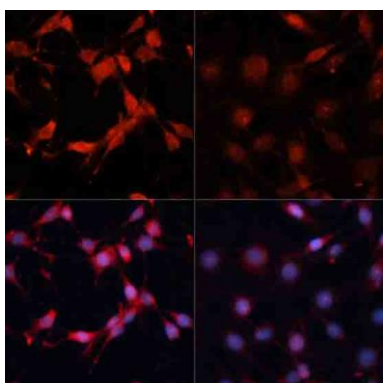
Western blot analysis of extracts of NIH/3T3 cells, using Phospho-P70S6K1-T389 pAb (CABP0564) at 1:2000 dilution. NIH/3T3 cells were treated by 10% FBS at 37°C for 30 minutes after serum-starvation overnight. Secondary antibody: HRP Goat Anti-Rabbit IgG (H+L) (CABS014) at 1:10000 dilution. Lysates/proteins: 25ug per lane. Blocking buffer: 3% BSA. Detection: ECL Basic Kit (CABM00020). Exposure time: 10s.



Immunohistochemistry of paraffin-embedded mouse heart using Phospho-p70 S6 kinase-T389 antibody (CABP0564) at dilution of 1:100 (40x lens).



Immunohistochemistry of paraffin-embedded mouse kidney using Phospho-p70 S6 kinase-T389 antibody (CABP0564) at dilution of 1:100 (40x lens).



Immunofluorescence analysis of C6 cells using Phospho-p70 S6 kinase-T389 antibody (CABP0564) at dilution of 1:100. C6 cells were treated by Serum-starvation overnight at 37°C.